

Highlights of Arizona

ARIZONA, with its 113,956 square miles, ranks fifth in size of all states—nearly as large as New England and New York.

In the San Xavier Mission, near Tucson, Arizona, is the finest example of early Spanish mission architecture on the North American continent.

Within the borders of Arizona there are undoubtedly 100,000 old ruins, the largest and most important being the "Casa Grande" near Florence.

Arizona ranks first in the production of copper; first in the production of asbestos; third in gold; fourth in silver; sixth in lead, and very high in zinc, tungsten, vanadium, quick-silver and other minerals.

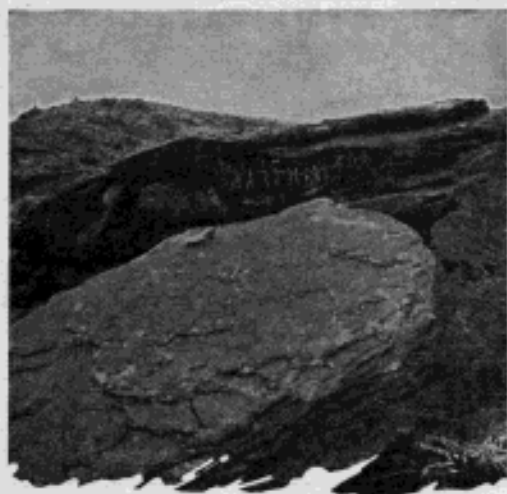
Arizona contains the greatest variety of plant life, even including ferns, of any state in the union.

The name "Arizona" is derived from the word "Arizonas," meaning "Little Spring," "Ari" small and "Zonac," spring, from the language of the Papago and Pima Indians.

Arizona contains the largest number of deer of any state in the union; the Kaibab forest alone containing about 30,000 head.

Saguaro, being the Spanish word for Sentinel, produces Arizona's state flower.

Arizona contains the longest unbroken stretch of yellow pine timber in the world.





EL PORTAL HOTEL

*"The Friendly House Beside
the Road"*



*A Good Place to Stop . . .
A Delightful Place to Stay*



Home Like and New

Best of Cuisine

Best of Service

Coffee Shop

Dining Room

EAST MAIN STREET AT CENTER

MESA, ARIZONA

APACHE GARAGE

PHOENIX



ARIZONA

Next to Orpheum Theatre

Storage, Towing, Tires and Accessories

24-Hour Mechanical Service

DISTRIBUTOR FOR FEDERAL TIRES

KENDALL MOTOR OILS
(100% Pure Pennsylvania)

235 West Adams

Phone 36600

APACHE GARAGE

Under Same Management Since 1918

Beautiful Gila Valley

THE Gila Valley with Safford, Arizona, as headquarters, lies in Graham County, Arizona. Within this valley are 33,560 acres which are in a high state of cultivation, producing in abundance, anything that grows in the temperate zone.

The long sought ruins of Chichilticalli made famous by the Coronado expedition, are located on the promontory jutting out into the valley near Geronimo. Numerous other ruins in the valley are responsible for its original name, "The Valley of the Pueblo Viejo." Proof of the fact that Coronado was in this vicinity is had in the unearthing of a sword inlaid with gold and beautifully engraved.

Old Fort Grant, a military post, was abandoned many years ago when the Apaches ceased their depredations and was later ceded to the State to be used for an Industrial School. Many of the old military buildings are still in use. It is located at the base of Mt. Graham at an altitude of 5,000 feet overlooking the broad expanse of the Sulphur Springs Valley.

Near the old camp is what is known as Battle Mountain, where the Apaches at one time, after having massacred an immigrant train, intrenched themselves and withstood the troops for a long time, but finally decamped during the night.

Cochise Stronghold

COCHISE STRONGHOLD is situated in the Dragoon Mountains, approximately 50 miles from Douglas. It was here that the old Indian chieftain, Cochise, who terrorized southern Arizona with raids during the early pioneer days, and particularly the two wide valleys on either side of the Dragoon range, made his fortress and stronghold. And well did he choose such a location, for the precipitous rocks, rising in tiers hundreds of feet in the air, made it impossible for the white enemy to enter the stronghold and the secluded canyons made excellent hiding places for rustled cattle and Indian loot. A space has been cleared in one place with benches and tables for week-end campers. There is also good game hunting in this range of mountains.



BUENA VISTA HOTEL



MODERATE RATES

*On U. S. Highway No. 180
The shortest route from El Paso to Coast by 108 miles*

SAFFORD

ARIZONA

Olive Hotel Under Same Management

Bask in Sunshine—Winter or Summer—In South-Eastern

ARIZONA

*Re-Live, in person, the thrilling, romantic Past of
THE GREAT SOUTHWEST*

Within the borders of Cochise County, which occupies the southeastern corner of Arizona, YOU may live again with Coronado in his search for the Seven Cities of Cibola—YOU may follow the dim trail of the Butterfield stages through perilous Apache Pass and Driagoon Pass—YOU may ride forth from Old Fort Bowie with General Miles in pursuit of Chief Geronimo—YOU may accompany Ed Schieffelin in his discovery of the rich silver lode which brought into being TOMBSTONE, the most famous silver-camp in the West—YOU will marvel at the many natural wonders on every hand. Dos Cabezas, an imposing mountain capped with enormous twin peaks. Dry Lake, with its shimmering mirage. Cochise Stronghold, the rocky fortress of Old Chief Cochise. Chiricahua National Monument often called the Wonderland of Rocks, with its millions of fantastic rock formations. Excellent hotels and guest ranches serve this area.



*"Wonderland" of Rocks near
Willcox, Arizona*

Write or call CHAMBER OF COMMERCE, Willcox, Arizona



White Mountain Region

MORE than a million acres of forest and mountain scenery traversed by over three hundred miles of trout streams, is the attraction offered by the eastern part of Arizona, with Springerville as the center. The United States Forestry office for the Apache National Forest is located in Springerville.

Besides the established resorts with their accommodations to take away from the summer vacationist all the cares of even camp life, there are innumerable camping sites where the more hardy soul craving exercise or solitude may pitch his tent.

At Springerville will be found a Chamber of Commerce that will be pleased to direct you or answer any inquiries regarding the camping sites, resorts, roads or other information which you may desire.

Game abounds in this section of the state, including all the small varieties, deer, bear, wild turkey and lion. The state fish hatchery is located at Greer, not far from Springerville, which supplies the streams of the state with trout and other game and food fishes.





The White Mountain Country

THIS region of the White Mountains and Blue Range is notably a recreational area. It is unexcelled for hunting and fishing,—for although the remarkable scenic beauty attracts many, it is the abundance and variety of game, together with the hundreds of fishing streams that lure the enthusiastic sportsman.

Springerville is the gateway to this paradise, where all the best routes from every direction converge. And from Springerville the roads lead into the mountains; to fishing and hunting, to unparalleled vistas of beauty, and on, to the picturesque life on Indian reservations and a wealth of variegated attractions.

Springerville Chamber of Commerce

The Hopi Snake Dance

ALL of the Indian tribes of Arizona have certain religious ceremonials in which dancing and pageantry play a part.

Every year at Indian Harvest time, one may witness probably the oldest form of ceremonial worship in the world, "The Hopi Indian Snake Dance." This rite is performed by these Indians as a prayer for rain.

This dance is something which is so thrilling, so dramatic, so picturesque and so unusual that people from all over the world make yearly trips to witness it. The snakes are gathered from the "four winds" in the belief that, inasmuch as the rain comes from the four directions, the snakes must in some way be associated with moisture.

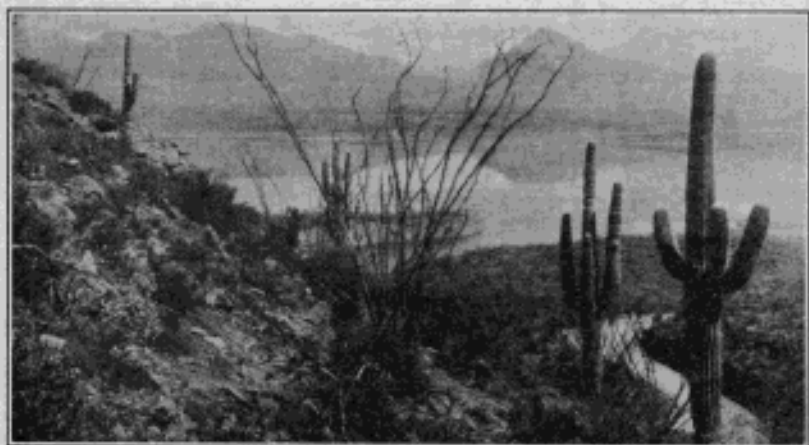
The Snake Dance proper begins just about sunset and is conducted above ground and is open to all comers. Before the beginning of the dance, the snakes gathered are taken to the Sacred Kiva, where none but the priests can enter. The Kiva is a large underground basement about the length of an Indian house. Here the snakes are purified by washing, the washing being accompanied by Hopi chant and prayer. Another dance witnessed during the Hopi Ceremonial is the Flute Dance, which is also a prayer for rain.

Spirit of the Old West

ARIZONA offers a unique field of recreation in its many fascinating guest ranches that are strung from its Northern boundary to the very frontier of Old Mexico. These guest ranches are among the surviving institutions of the early days of the West and retain practically all of the original splendors that make Arizona historically interesting.

The guest coming to Arizona who extends his stay on a guest ranch becomes acquainted with the thrilling aspects of typical western ranch life and at the same time enjoys every metropolitan comfort provided for his well-being and continued satisfaction.

Horse back riding, cowboy sports, swimming and tennis are offered along with the general ranch atmosphere such as roundups, branding and roping, and the daily routine of busy cowboys.



Coolidge Dam

THE Coolidge Dam, finished late in 1929, was dedicated by ex-President Coolidge in March, 1930. It is the latest and most unique piece of work that Uncle Sam has ever done along that line. It is the largest multiple dome dam in existence. The height of the dam above the stream bed is 250 feet, length at bottom 300 feet, length at top 880 feet. It will back the water up the Gila River 23 miles and impound 1,200,000 acre feet of water, submerging the old San Carlos Indian Agency which has been notable as the home of the notorious Apache chieftains, Geronimo, Apache Kid, Natchez, and others. The creation of the San Carlos Lake involved the moving of 20 miles of the Southern Pacific R. R. line. The lake has been stocked with several kinds of fish and when opened to the public for fishing, will be a great place for that sport. This romantic and beautiful place, one of the newest and greatest attractions in Arizona, is only 62 miles from Safford on U. S. 180.

Globe Miami District

THE Globe-Miami district has a strategic location from a tourist point of view. Lying to the East is the newly dedicated Coolidge dam, a multiple arch dome type, the only one of its kind in the world. The waters from this storage dam irrigate a large acreage near Florence and Casa Grande. To the West is the famous Roosevelt Lake, a man-made sea 30 miles in length, surrounded by rugged mountain ranges. Here one may enjoy bass fishing the year 'round. One can leave an elevation of 3,500 feet and in half an hour's ride, up over easy mountain grades, through tall murmuring pines, reach an elevation of 8,000 feet. It is a natural summer resort without the expense of the coast beaches.

As a place to live in the year 'round, the district holds many advantages. The winters are mild, with occasional light snowfalls. Summer nights are cool and delightful.

By air, this district is only forty minutes away from Phoenix. One can travel either over the top of the Superstition Mountains into Phoenix or by way of the Tonto Cliff Dwellings, Roosevelt Lake, Horse Mesa Dam, Mormon Flat Dam. Either route is a delightful trip, and one long remembered.

South of Globe in what is called "Six Shooter" canyon, has been built a large village of "pueblos" for the purpose of scientific archaeological research. The main building is at the old "Healy" terrace, and this houses the administration offices. This group of buildings has been designated as "Gila Pueblo" and will be used by students of the various universities throughout the country for research work.

For Further Information, Write

W. A. SULLIVAN, *Secretary*

Chamber of Commerce of Globe

The Wickenburg Region

IN the Wickenburg section of Arizona may be found a recreational area which has a distinct fascination for the jaded vacationer seeking a new scene and a new type of entertainment.

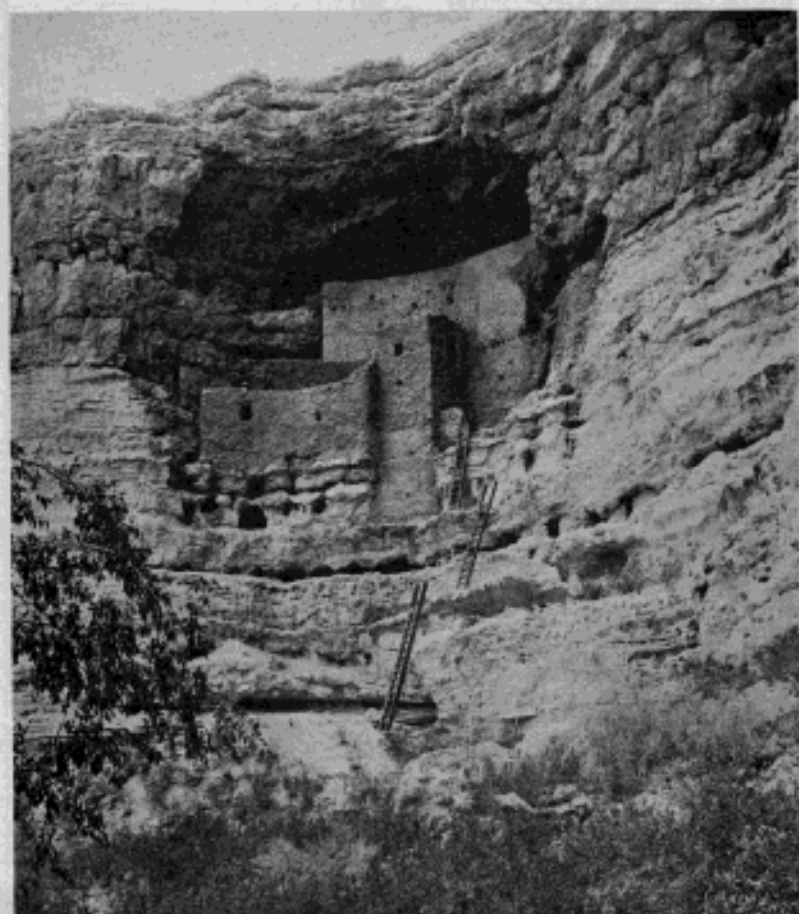
The altitude, 2,200 feet, allows outdoor activities at all times, with the winters exceptionally delightful. The topography of the land in this region is considerably varied. There are a thousand fantastic hills tumbled into confusion.

Canyons, caves, mesas, plains, old Indian ruins, springs, forgotten mines, painted cliffs, and ghost mining cities intrigue the explorer.

On every hand lies the beauty of the desert flora, the palo verde, the creosote, the ocatilla, the chollas, and the cruxifixion thorn.

For the animal and bird lover there are fleeting glimpses of running quail, and strange desert animals.

Riding is the principal recreation of the vacationist in this section of the state.



MONTEZUMA'S CASTLE



Remuda Ranch

A New Life in an Old, Old Land

Remuda Ranch is 2200 feet above sea level. It enjoys a warmer winter climate than the southern part of the state, due to its lower altitude.

The average temperature for the season is from 65 to 80 degrees during the daytime.

Rainfall is slight in the Wickenburg district.

Horseback riding and trips, cowboy guides. Day trips and picnics by horse and auto. Overnight trips, horse and auto. Tennis, croquet, horseshoes, clock golf, and our own nine hole practice golf course of 2162 yards with Bermuda grass fairways and sand greens.

Hunting of game in season such as quail, deer, dove, etc.; trapping of coyotes, badger, skunk, and fox.

Rodeos in which the guests take part are held on the ranch.

One mile away at El Recreo there is a swimming pool and dancing every Saturday night.

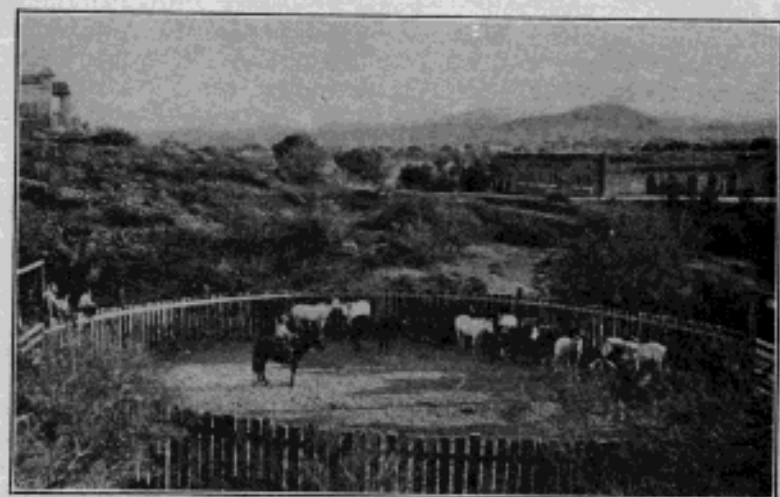
Perhaps you have never visited Arizona and would like to know more about the various won-

ders and scenic beauties throughout the state, a great many of which are in the Remuda Ranch district. There are many interesting trips you will want to make such as the one day trip by auto north to the Grand Canyon, or southeast to the Apache Trail and Roosevelt Dam.

Rates are from \$45.00 per week single to \$110.00 double. Special rates are made for families by the month. All rates are American plan.



VIEW OF BUNGALOWS AND PUTTING GREEN



CORRAL AT REMUDA RANCH

Write for Reservations to

JACK BURDEN, Owner and Manager

WICKENBURG

ARIZONA



The Chiricahua Mountains

THE Chiricahua National Monument, in the Chiricahua Mountains, near Douglas, Arizona, consists of a series of fields of large rhyolitic monoliths eroded into many fantastic shapes. The area is cut by deep-walled canyons, some of the walls being about 200 feet in height. There are pillars, balanced rocks, and formations resembling many animals and faces scattered over the entire area. Against the deep blue of the sky a picture is made which would be difficult to transfer to canvas not only on account of the multitudinous cracks, crevices, and irregular forms of the rocks themselves, but also because of the many varying hues and gradations of color.

Douglas is the gateway to the rich state of Sonora—"The Treasure House of Mexico," and trading center for the mining districts of Cananea, Nacozari, El Tigre and others.

The south city limit of Douglas is a very ordinary barbed wire fence which constitutes the border line separating Arizona from Mexico. On the other side is the quaint city of Agua Prieta, population of 2,500. This little Mexican city offers a striking contrast in language, customs, traditions and entertainment. Agua Prieta has the name of being one of the cleanest, quietest and most orderly of all border towns. Custom and immigration officials, of course, are on duty at the line, but American visitors are always welcomed. Here you will find a close friendly relationship existing between the two nationalities, that gives you an assurance of safety and pleasure. The gate between the two towns never closes.



Gadsden Hotel

DOUGLAS, ARIZONA

Southern Arizona's Most Beautiful Hotel

FIREPROOF

170 Guest Rooms

170 Baths

CAFE AND GARAGE IN CONNECTION



Catering Especially to the Wants of the
Traveling Public

On the Newly Completed U. S. Highway 80

The Only All Weather Route Through Arizona

MR. AND MRS. F. O. MACKEY

Owners and Operators

San Xavier Mission

SAN XAVIER DEL BAC, the "Father of the Missions," is the most perfect type of missions built under Spanish rule. It is the best preserved of all the chain built in the desert country by the Franciscan padres, and still serves the people for whose benefit it was erected.

These Spanish padres, fired with religious zeal, tramped across the great Western desert from Mexico and established a chain of mission churches as they progressed. These missions, soaring heavenward above the little villages that built around them, dominated the life of the communities. True to their cause, these brave padres faced disaster, privation and even death to perpetuate the missions and their meaning. The dream of the padres has been realized, and the cause for which they died has been realized.

Founded in 1692, the mission was conducted continuously by resident Jesuits until 1751, then for a few years it was administered as a *vista* from Tubac, and in 1767, following the Spanish expulsion of the Jesuits, was turned over to the Franciscans. This order continued the work of the mission until 1827, when Mexico expelled all the religious orders, but it was ministered to intermittently from Magdalena, although practically abandoned. Following the Gadsden purchase in 1854, the mission came into the diocese of Santa Fe, but not until 1866 were missionaries from the New Mexico city able to reach the Santa Cruz valley and take up the work at the mission.

San Xavier rises from a slightly elevated position and can easily be seen from all parts of the surrounding valley.



Official AAA Appointments In Arizona

Hotels and Resorts

	Single	Double		Single	Double
Ajo —			Arizona Biltmore		
Hotel Cornelia.....	\$1.50-3.00	\$2.00-4.00	Hotel	\$16.00 up	\$26.00 up
Bisbee —			Autopia Hotel		
Copper Queen			Apts.	\$2.00 up	
Hotel	\$1.50-3.50	\$2.50-5.00	Ingliside Inn	\$10.00-15.00	\$18.00-28.00
Casa Grande —			Josake Inn and		
San Carlos Hotel	\$1.00-2.50	\$2.00-3.50	Tea House.....	Rates on Application	
Chandler —			Westward Ho		
San Marcos			Hotel	\$4.00 up	\$7.00 up
Hotel	\$14.00-16.00		Prescott —		
Douglas —			Hassaymapa Hotel	\$1.50-4.00	\$2.50-6.00
Gadsden Hotel	\$2.50 up		Safford —		
Flagstaff —			Buena Vista	\$2.00 up	\$3.00 up
Hotel Monte			Seligman —		
Vieta	\$2.00 up	\$3.50 up	Modern Hotel.....	\$1.50-3.00	\$2.00-4.00
Gila Bend —			Springerville —		
Stouts Hotel.....	\$1.50-2.50	\$3.00-5.00	Apache Tavern....	\$1.50 up	\$2.50 up
Globe —			Tempe —		
Murphy Hotel.....	\$1.50 up	\$2.50 up	Casa Loma Hotel	\$2.00 up	
Palisade Lodge....	\$2.50-3.00	\$3.50-4.00	Tucson —		
Holbrook —			Congress Hotel....	\$2.00-4.00	\$3.00-6.00
Commercial Hotel	\$1.00-4.00	\$3.00-4.50	Santa Rita Hotel	\$2.50-5.00	\$2.50-7.00
New Hotel			El Conquistador		
Holbrook	\$2.50 up	\$3.50 up	Hotel	\$12.00-25.00	\$22.00-35.00
Kingman —			El Presidio Hotel	\$2.00-5.00	\$4.00-10.00
Beale Hotel.....	\$2.00-3.50	\$3.00-4.50	Pioneer Hotel	\$3.00 up	\$5.00 up
Hotel Ideal.....	\$1.50 up	\$2.00 up	Wellton —		
Litchfield —			Wellton Hotel	\$1.50-2.00	\$2.00-3.00
Wigwam	Rates on Application		Williams —		
Mesa —			Grand Canyon		
El Portal Hotel....	\$3.00 up	\$5.00 up	Hotel	\$1.00 up	
Outman —			Wilcox —		
Hotel Durlin.....	\$1.00-2.00	\$1.50 up	Wilcox Hotel....	\$1.00 up	
Payson —			Winslow —		
Natural Bridge			Howell Hotel.....	\$3.00 up	
Ranch	Rates on Application		Yuma —		
Phoenix —			Hotel Del Ming...	\$2.50-3.50	\$3.50-7.00
Adams Hotel	\$2.50-3.00	\$4.00-10.00	Hotel Lee	\$1.50-2.50	\$2.00-3.00
Adobe House.....	Rates on Application				
Arizona Hotel.....	\$1.50-3.00	\$2.50-5.00			

Auto Camps

Buckeye —		Phoenix —	
Camp Bowers, 1 mile West		Autopia, East Van Buren	
Claypool —		Beach Court, East Van Buren St.	
Camp June		Blue Bonnet, Auto Court,	
Flagstaff —		810 S. 19th Ave.	
Pine Grove Camp		Canary Court, 221 N. 21st Ave.	
Florence —		Prescott —	
Cactus Forest Ranch, Five Miles East		Shadow-Croft Tourist Court	
Globe —		Tucson —	
Phillip's Auto Camp		Pepper Tree Tourist Court, So. 6th Ave.	
Grand Canyon —		Wickenburg —	
Rowe's Well Camp		Cactus Lodge	
Holbrook —		Williams —	
White Auto Camp		Pine Springs Auto Camp	
Kingman —		Wilcox —	
Ed's Camp		Wilcox Auto Camp	
Walapai Auto Court		Winslow —	
Litchfield —		Hazell Camp Ground	
Litchfield Auto Camp		Yuma —	
Mesa —		Rite-Way Auto Camp	
Harvey Auto Court		Yuma Auto Court	

Guest Ranches

Oracle —	
Rancha Linda Vista, 37 miles north of Tucson. Modern cottages, each with bath and hot and cold water.	
Patagonia —	
Circle Z Ranch, 17 miles north of Nogales. Year round season. Bungalows and main ranch house.	
Sonoita —	
Hacienda Los Encinos. Year round season. Bungalows and cottages.	
Tempe —	
Hayden Ranch. Two miles from Tempe. Exclusive. Every convenience.	
Wickenburg —	
Bar F. X. Ranch in Wickenburg. Accommodations for 16. DeLuxe rooms. Monte Vista Ranch about two miles north of Wickenburg on Highway 89. Modern ranch building with detached bungalows. All modern conveniences.	
Remuda Ranch. One mile south of Wickenburg. Seasonal hunting and trapping. Tennis and golf. Modern comfortable accommodations.	

Garages and Emergency Stations

- Ajo—**
 *Fenner Garage
 (Call Long Distance)
- Apache Junction—**
 *Apache Junction Inn and Service Station (Call Long Distance)
- Arlington—**
 *Arlington Store and Garage
 (Call Long Distance)
- Ashfork—**
 *Ash Fork Garage
 Phone 1
- Benson—**
 *Meisenheimer Garage
 (Call Long Distance)
- Bisbee—**
 *Brophy Garage and Supply Co.
 (Call Long Distance)
- Casa Grande—**
 *Earl D. Rayless Motor Co.
 Phone 54
- Chandler—**
 *Wayne Heffner Service Station
 Phone 7
- Coolidge—**
 *Valley Garage
 (Call Long Distance)
- Douglas—**
 *Gadsden Garage
 Phone 271
- Flagstaff—**
 *E. L. Chase Motor Company
 Morrow-Lehr Motor Company
 Phone 45
- Florence—**
 *Heinie's Garage
 Phone 26
- Gilbert—**
 *Blakeley Motor Company
 Phone 1R13
- Globe—**
 *Castle Body & Fender Works, Broad St.
 Phone 100
 Electrical Equipment Company, Broad St.
 (Ignition and Battery Service)
- Holbrook—**
 *Holbrook Motors
 *Whiting Brothers Garage
 (Call Long Distance)
- Kirkland Junction—**
 *Kirkland Junction Garage
 (Call Long Distance)
- Mesa—**
 *Mesa Garage
 Phone 14
- Morrison—**
 *Lee & Jack
 (Call Long Distance)
- McNary—**
 *Apache Garage
 (Call Long Distance)
- Nogales—**
 *Gullekson Motor Co.
 (Call Long Distance)
- Outman—**
 *Fox Garage and Tire Service
 *Mission Camp Garage
 (Call Long Distance)
- Parker—**
 *Parker Motor Co.
 (Call Long Distance)
- Peach Springs—**
 *Peach Springs Garage
 (Call Long Distance)
- Phoenix—**
 Adams Garage, 32 E. Adams (Storage)
 *Apache Garage, 235 W. Adams St.
 (24-hour Service)
 Phone 3-4690
- *Indicates towing service.
- Electrical Equipment Co., 312 N. Central**
 (Ignition and Battery Service)
 Phone 3-3186
- First Avenue Garage, 314 N. 1st Ave.**
 (Storage)
- George Eberle Tire and Brake Service,**
 350 W. Van Buren St.
- McAlcer Motor Co., 531 N. Central**
 (Storage)
- Martin's Service Station, 1745 E. Van Buren St.**
- *O'Connell Brothers Auto Top and Paint Co., 542 N. First St.**
 (Body Repairing)
 Phone 3-4181
- *Palmer's Collision Works, 701 W. Jefferson**
 (Body Repairing)
 Phone 3-2191
- Public Service Storage Garage,**
 123 S. First Ave.
- *Talbot & Snyder Auto Top & Body Co.,**
 816 E. Van Buren (Body Repairing)
 Phone 3-9909
- Prescott—**
 *Foster Auto Company
 Phone 67
- Safford—**
 *Sowell Garage
 (Call Long Distance)
- Seligman—**
 *West Side Motor Company
 (Call Long Distance)
- Somerton—**
 *Simon's Garage
 (Call Long Distance)
- Springerville—**
 *Becker's Garage
 (Call Long Distance)
- St. John's**
 *Whiting Brothers
 (Call Long Distance)
- Tucson—**
 Electrical Equipment Company,
 139 E. 8th Ave.
 (Ignition and Battery Service)
 *Hart Brothers, 185 E. 6th Ave.
 Phone 239
 Tucson Auto Works, 121 S. Fourth Ave.
 (Body Repairing)
 Tucson Motor Service, 6th Ave., Cor. 12th
 (Storage)
- Valentine—**
 *Onis Garage
 (Call Long Distance)
- Wellton—**
 *Wellton Garage
 (Call Long Distance)
- Wickenburg—**
 *Hyder's Garage
 (Call Long Distance)
- Williams—**
 *White Garage
 Phone 111
 White Service Station
- Willcox—**
 *Nanney's Garage
 (Call Long Distance)
- Winkleman—**
 *Carter's Garage
 (Call Long Distance)
- Winslow—**
 *Buzell Motor Company
 Phone 230
 El Gran Garage
 Popular Service Station
- Yuma—**
 *Hulse & Dick, Gila St.
 Phone 26
 *Yuma Motors, Inc., Main, Cor. 3rd.

Cafes

- Holbrook—**
 Green Lantern Cafe
- Phoenix—**
 Grand Cafe, 84 W. Adams St.
- Prescott—**
 Owl Drug and Candy Co.
- Williams—**
 Scudder's Grand Canyon Cafe

WT9791

Am. 69

Carry Your Maps Here

THIS convenient pocket will enable you to carry your maps in this book for ready reference.

If you find that additional information concerning roads, accommodations, or attractions is necessary, the AAA offices and Official Stations throughout the state are at your service.

Arizona Automobile Association

Rocky Mountain Motorists, Inc.



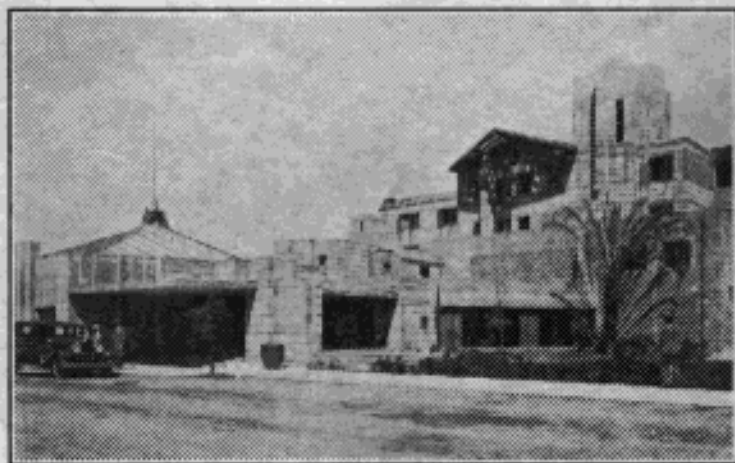
PHOENIX

DENVER

"In the Country Where Sunshine Reigns"

THE ARIZONA BILTMORE

AT PHOENIX



Unique in architecture, with service to satisfy the most exacting, the Arizona Biltmore is located incomparably in the gorgeous climate and scenery of the Salt River Valley where every breath of air and every ray of sunshine makes itself felt as a revivifying tonic.

*At the Foot of
Squaw Mountain*

*130 Acre All
Green Golf Course*

Thirty miles of bridle trails leading high into the mountain back of the hotel.

Tennis Courts

Attractive Shops

Stock Exchange

American Plan

WHERE ONE CAN BE "ROUGH AND READY" ALL DAY AND
COME BACK TO LUXURIOUS COMFORT AT NIGHT!