

Guest Ranches

Southern Arizona

Guest Ranches

Southern Arizona



Southern Pacific

Southern Pacific



GUEST RANCHES *of* SOUTHERN ARIZONA

*Located in a region of fascinating interest,
to which only Southern Pacific offers direct
service of main line transcontinental trains.*

NOT so very many years ago some inspired soul, looking for novelty, and more resourceful than his fellows, conceived the happy idea of spending his precious vacation time on a western cattle ranch. He came. The ranch took him in. He was made a member of the family and he entered into its life. Days spent in the open, in the saddle, and nights under the whispering stars wrought their miracles as they always do, and when our vacationist returned to his home tanned, husky, bubbling with renewed vigor, and brimming with vitality, his friends marveled—and followed his example. So popular has this form of holiday become that today in Southern Arizona there is an increasingly large number of ranches that cater regularly to these visitors. This booklet is to acquaint you with these Southern Arizona guest ranches.

How firm a hold ranch life takes upon the visitor may be inferred from the fact that there are many people who come back to their favorite ranch year after year for relaxation, rest and sport. It is not unusual for visitors to come for a two weeks' stay, and remain for several months. The record is held by a man who arrived at a guest ranch five years ago for

a short stay—and is still there. When people take to the life on a guest ranch so strongly there must be some very compelling reason.

Life on a ranch is altogether what the visitor may wish to make it. It may be "the sweet pleasure of doing nothing", with restful, lazy hours spent, book in hand, at the ranch house, in one's own cabin, or beneath the shade of some old forest monarch. One may drowse and dream, or, as the old prospector put it, "jest drowse". On the other hand, it may be as active an existence as any one could wish. One may join the cowboys as they canter off into the hills or down into valleys in the course of their daily work; or, with canteen and lunch, ride alone or with a party on mountain picnics or excursions of exploration.

On every ranch the chief diversion is, naturally, horseback riding. At most ranches the guest is assigned, immediately upon his arrival, a mount and







equipment for his exclusive use so long as he remains. The experience of the rider is carefully considered and his horse furnished according thereto. For those who have not ridden before, mounts docile enough to reassure the most timid are supplied. For the guest who likes them spirited, and can handle them, horses are available that will test his prowess in the saddle.

Some ranches have tennis courts, putting greens and a few holes for practice golf. Others have swimming pools, target ranges, and other entertainment.

The mountains of Southern Arizona are well supplied with wild game, and offer unlimited sport for the hunter. Coyotes, bobcats, quail, rabbits, doves, pigeons, duck, mountain lion, bear, lobo wolves, deer, wild hogs and mountain sheep are plentiful. The kind of game to be taken at various ranches varies somewhat, according to location. Almost all ranches provide guides and equipment, at moderate rates, for hunting trips.

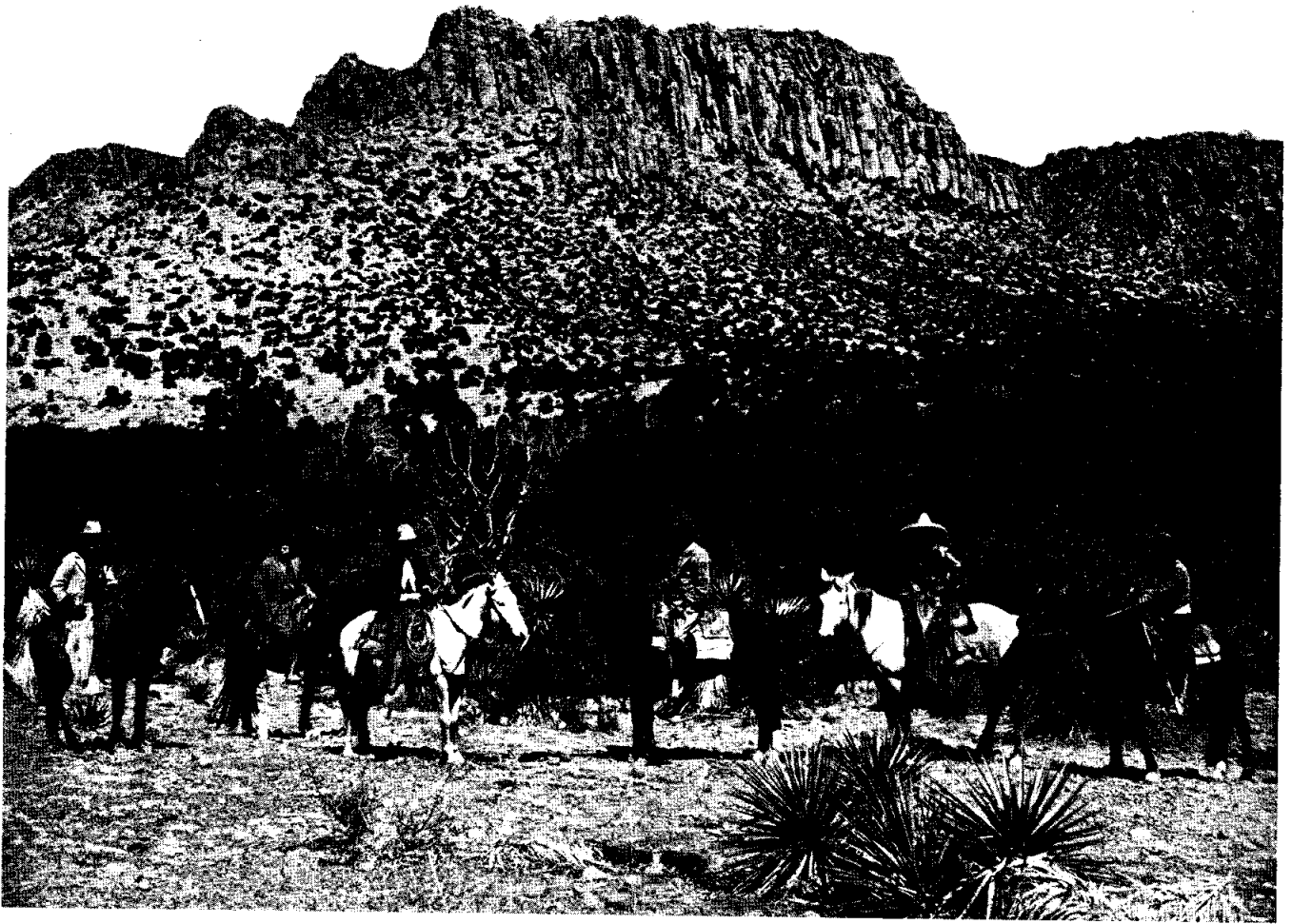
Usually, after a day on the range or in the hills, the thoughts of bed and repose fill the mind to the



exclusion of most other matters, and shortly after dinner one is usually well content to "call it a day" and to seek the deep and dreamless sleep that comes to tired bodies and relaxed nerves. However, if one is inclined to play in the evening, there are cards and dancing. Often a picnic by moonlight is arranged, where the guests gather around a roaring campfire and listen to some oldtimer spin yarns of the old romantic west.

While all of the guest ranches are alike in a general sense, yet each has its own personality and its in-

dividual attractions. La Osa is but one mile from the international line and the quaint little Mexican town of Mesquite, drowsing peacefully in the sun-splashed hills. The Circle Z is but a short ride from Nogales, Ariz., and Nogales, Old Mexico, which are separated only by a wire fence, and which have splendid shops, excellent restaurants, cafes and places of amusement. The Bar O is just twelve miles by excellent highway from Tombstone, and only a short distance from Charleston, which are, respectively, the "Wolfville" and the "Red Dog" of Alfred Henry Lewis'



“Wolfville Tales”. The trail of “Billy the Kid”, notorious outlaw of frontier days, crosses and recrosses the country around Tombstone. Fish Creek Inn is located in one of the most scenic spots on the famous Apache Trail highway of Arizona, and near the prehistoric Apache Trail cliff dwellings and the world-famous Roosevelt Dam. Other ranches are but a short ride from the “ghost cities”—old mining camps that once hummed to the sound of human activity and pulsing machinery but which now stand deserted, with doors hanging on rusted and broken

hinges, windows shattered, and hitching rails empty.

Some of the ranches are genuine old-time cattle ranches, still running herds that number into the thousands. Others are old ranches on which cattle are no longer raised. Still others are modern plants, built at the most advantageous points for the definite purpose of entertaining the tourist who wishes to “rough it” *de luxe*. Some cater exclusively to boys and young men who yearn to go west and see the “wide open spaces” made popular by the movies. There is a place to suit everybody, no matter what



his taste, and all of them are characterized by the open western hospitality and good fellowship that make the guest feel like a native as soon as he arrives.

The spirit of the "old west" finds expression in the annual rodeos at Tucson and Phoenix. The rodeo at Phoenix is usually held in January, the one at Tucson in February. All the strength, skill and horsemanship of the cowboy are displayed in contests of the range in these events. The best riders and ropers in the country participate, many coming hundreds of miles. Rodeo time is made a holiday and the townspeople join with the visitors in the celebrations.

Delightful Climate

CONTRARY to popular belief, Southern Arizona is not an illimitable expanse of desert waste but, rather, a land of majestic mountain ranges, rolling hills, deep canyons and magic mesas, with a winter climate known popularly to travelers as the "finest in America" and often likened to that of lower Egypt. United States weather records for forty years give an average of 309 days of sunshine a year. The sunny, mild, dry and invigorating nature of the weather assures one spending practically every day in the open. In winter, day after day brings sunshine and crisp, exhilarating air that puts a sparkle in the eye and a zest for living in the heart.

Most of the Southern Arizona guest ranches are located in the mountains, at an elevation of from 3000 to 6000 feet, with poplar, palo verde, manzanita, oak and pine, as well as other growth. By reason of the altitude, the days in winter are clear,

bracing and stimulating; the nights are cold, and a fire in the big, open, friendly fireplace is often needed.

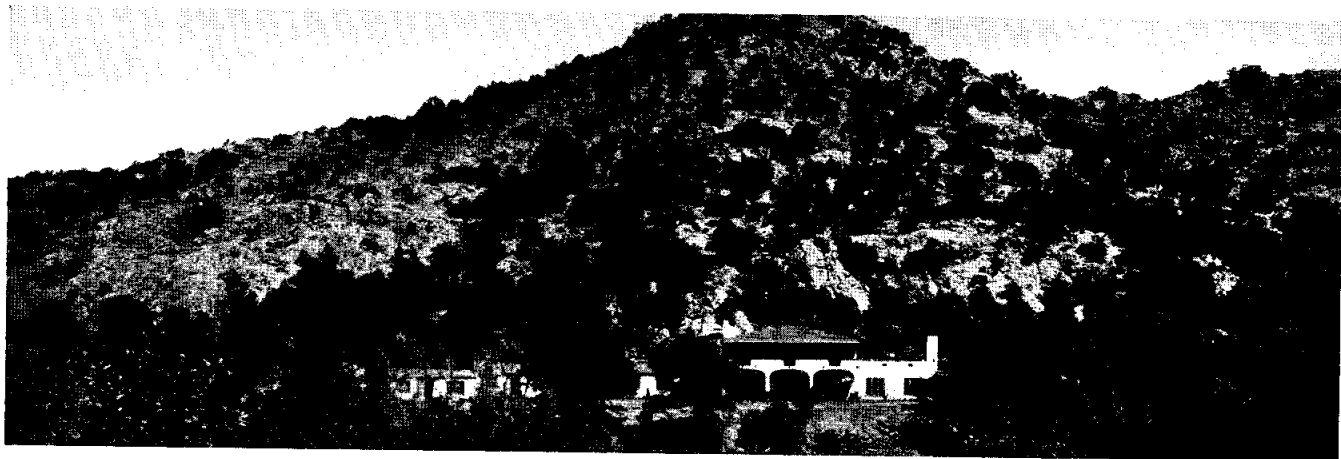
What to Wear

THERE is little style about a guest ranch and the atmosphere is essentially democratic. So, many changes of outer clothing are not necessary. For ladies, medium weight riding suits, walking skirts, sweaters and the usual outdoor clothes worn in eastern mountains. Men wear riding breeches, chaparejos or blue jeans, flannel shirts, etc. Everyone should be provided with leather jacket, coat or sweater for wear after sunset, and a flashlight. In general, comfort is aimed at, rather than style. (Large trunks should not be taken).

Easy to Get There

IN THE pages following is given a brief description of some of the guest ranches in Southern Arizona, a region to which main line transcontinental train service is offered only by Southern Pacific. This railroad offers two main routes from the East—Golden State Route (via Kansas City and El Paso) and Sunset Route (via New Orleans





and El Paso). The trip may be made in minimum time and maximum comfort.*

It is a far cry from the urban activity and mad rush of a metropolis like Chicago to the restful, quiet, ranch life of Arizona; yet the visitor may board a Golden State Route train in Chicago and only two days later, without changing from his comfortable Pullman, arrive at his destination, where he is met by automobile and transported smoothly over fine roads to the ranch and the beginning of a new adventure.

The information given in the following pages has been secured by Southern Pacific direct from the ranches. Rates shown are accurate at time of printing this booklet, but are, of course, subject to change. All of the ranches described issue attractive literature containing complete information, and it is suggested that the prospective visitor write them direct for same.

The capacity of all ranches is limited, and as accom-

modations are usually in demand, advance reservations should be made through communicating with the management direct. Map on page 15 indicates location of respective ranches and station on Southern Pacific from which each is reached.



Old Homestead Ranch

Mrs. C. A. Weiler, Route 5, Box 343, Phoenix. Four miles from Phoenix station. Ranch house in center of citrus orchard, which provides fruit for guests throughout winter. Usual ranch activities indulged in; guests are also able to visit theatres, shops, etc., of Phoenix. Ten guests can be accommodated. Equipped with electric light, private baths, hot and cold water. Rates \$40 a week. Horses \$3 a day extra. Season, October 1 to May 1.

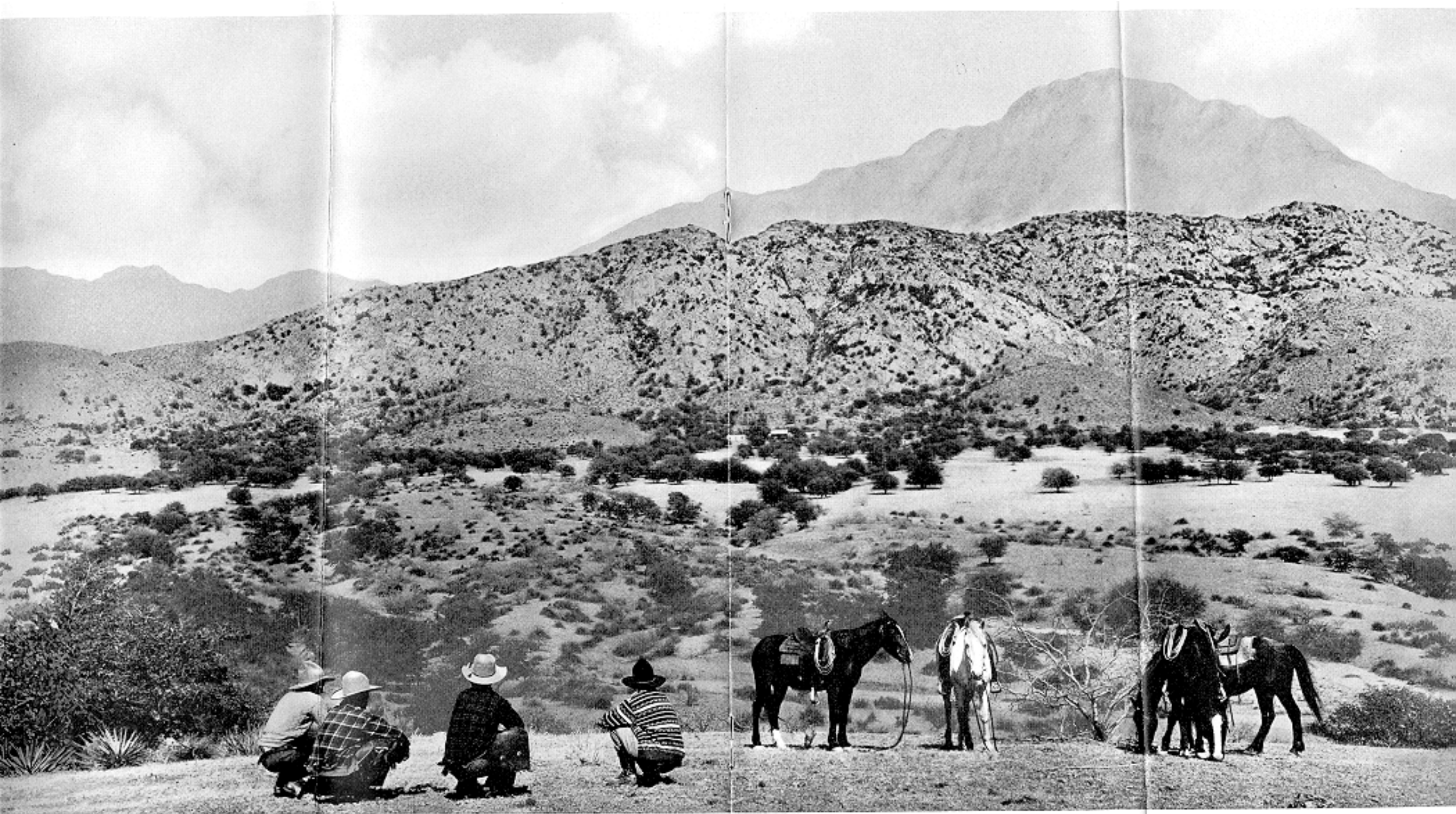
Fish Creek Inn and Ranch

Donald T. McQueen, Manager, Fish Creek (via Mesa). On famous Apache Trail highway of Arizona; 44 miles east of Mesa, 60 miles west of Globe. Guests met at either point on arrival of Southern Pacific trains if management is notified in advance. Accommodations for twenty-five. Season, November 1 to May 1. Rates \$10 a day and up, American plan.

Faraway Ranch

Ed. Riggs, Manager, Dos Cabezas. Take Southern Pacific to Willcox, where guests having reservation will be met by automobile. In very heart of Chiricahua Mountains; Chiricahua National Monument is one of nature's greatest marvels. Guests are housed in main ranch house and (Continued on page 10)

*Any Southern Pacific representative shown on page 15 of this booklet will gladly arrange a trip to any of these ranches, make Pullman reservations, and give any other assistance possible.



Here is the Old Southwest today. This is the land of great vistas, of sunshiny winter days, of sport and adventure. It has long been a place favored by artists and writers, and now its hospitality is open to those who seek the zeisful outdoor life of the range or the quiet relaxation of the old time hacienda.

(Continued from page 7) adjoining cottages. Swimming pool. Rates \$25 a week, American plan. Horses \$22.50 a month extra. Special rates for short trips. Open all year.

Bar O Ranch

Harry C. Kendall, owner, Tombstone. Comprises twenty miles of mountain and valley located against Dragoon Mountains at elevation of 5500 feet, overlooking San Pedro Valley and commanding unsurpassed distant mountain view. One of oldest cattle ranches in country; is still actively engaged in that business. This is hunting ground of old Apache Indian Chief "Cochise"; Cochise Stronghold, where he made his last stand, is only a day's ride away. Take Southern Pacific to either Benson or Fairbank, where train is met by ranch car, on advance notice. Capacity 15 guests, who occupy bunk houses in grove of live oaks. Rates \$50 a week, \$150 a month, including use of horse. Open year round.

Circle Z Ranch

Address, Zinsmeister Ranch Co., Patagonia. Take Southern Pacific to Nogales, where guests are met and transported to ranch, 17 miles distant. Offers every convenience of city home, together with all attractions of ranch life. Guests are housed in bungalows of four rooms and two baths, containing tub, shower, and toilet. Electric lights, steam heat, hot and cold water. Tennis court, putting green, target range, swimming pool. Located in Patagonia Mountains, altitude 4000 feet, amid most beautiful surroundings. Rates \$70 a week and up; this includes everything ranch has to offer except personal laundry. Season, October 1 to June 1.

Rancho Linda Vista

Geo. S. Wilson, Manager, Oracle. Take Southern Pacific to Tucson. Located 37 miles north of Tucson, and 2 miles from beautiful little mountain village of Oracle, in Catalina Mountains. Ranch also maintains camp in the Canada del Oro (Canyon of Gold) a few miles farther up in mountains. Here Harold Bell Wright wrote "The Mine With the Iron Door". Camp is used as base for hunting trips for bear, wolves, and lion. Linda Vista is regular cattle ranch; many an impromptu wild west show is staged in course of day's work. Accommodations for 45 to 50 guests, who are housed in modern cottages, each with its own bathroom and hot and cold water. Open year round. Rates, double room \$35 a week, \$135 a month. Single room \$40 a week, \$150 a month. Horses \$15 a week, \$50 a month.

Seven Dash Ranch

A. McEwen, owner, Johnson, Cochise County. Take Southern Pacific to Dragoon, where ranch car will take you to ranch, 12 miles distant. Located on lower slopes of Little Dragoon Mountains, in heart of one of largest cattle ranches in Arizona. Main ranch house and adjoining bungalows afford comfortable accommodations for 25 guests. Modern plumbing and constant supply of hot water. Good home cooking with plenty of fresh vegetables and best of meats; fresh eggs and milk in abundance. Rates \$55 to \$70 a week, including use of saddle horse. Season, Sept. 1 to May 31.

Hacienda De La Osa

Mrs. Arthur Hardgrave, Proprietress, Tucson. Located in Sasabe Valley between Mesa Verde and Santa Rita Mountains, 70 miles from Tucson and one mile from Mexican border. Elevation 3500 feet. One of oldest ranches in Southern Arizona. Scene of movie "The Son of His Father" by Harold Bell Wright. Zane Grey's "Light of Western Stars" with Dustin Farnum was also filmed here. Plenty of big game. Most of hunting carried on in Old Mexico. Guides and camping equipment may be arranged for. In main ranch building are guest rooms for limited number. Individual buildings of substantial adobe construction, surrounding a large patio, offer separate quarters. Accommodations for 25 guests. Rates \$35 a week and up. Riding horse \$5 a week additional. Open year round.

Y Lightning Ranch

F. B. Moson, owner, Hereford. Six miles from Hereford station on Southern Pacific. Consists of 25,000 acres, situated on gently sloping mesa of San Pedro Valley. Elevation 4880 feet. Three miles away are heavily-wooded Huachuca Mountains. Hunting trips can be arranged, and visits to Naco, and to Agua Prieta, just across border in Old Mexico, with their attendant Bohemian atmosphere. Essentially a cattle ranch; is in no sense a hotel, but guests will find every comfort commensurate with life on modern high-class ranch. Guests occupy single and double cabins, comfortably furnished, with gas light, heating stoves and running water. Ranch has modern bathing facilities and hot water at all hours. Rates \$50 a week. Season Oct. 15 to May 15.

Rancho Manzanita

Mrs. E. E. Ainsworth, owner; J. P. Davis, Manager. Address Box 70, Douglas. In Chiricahua Mountains on Turkey Creek, 59 miles from Douglas, on Southern Pacific. Altitude 5000 feet. Main building is reinforced cement construction; adjacent are individual bungalows of two or three rooms, each with fireplace and bath. Coon hunting by moonlight; camping trips, barbecue; bear hunting with dogs. Nine-hole golf course, tennis courts, swimming pool. One of finest orchards in Arizona and several acres of cultivated garden provide a variety of fresh fruits and vegetables. Rates \$60 a week and up. Saddle horse \$15 extra a week. Season, September to June, although ranch is open year round.

Fresnal Ranch

Bryan F. Peters, owner, Tucson. Fifty-two miles southwest of Tucson. Designed especially for boys and young men. Eighteen guests can be accommodated; there is a dormitory accommodating six, and detached cottages for one or two persons each. Season, October to June, although ranch is open year round and there are some guests on ranch all the time. Tennis courts. Rates \$200 a month and up, including horse and saddle equipment.

Flying V Ranch

E. G. Furfey, manager, Box 476, Tucson. In beautiful Catalina Mountains, 14 miles northeast of Tucson. Cottages are



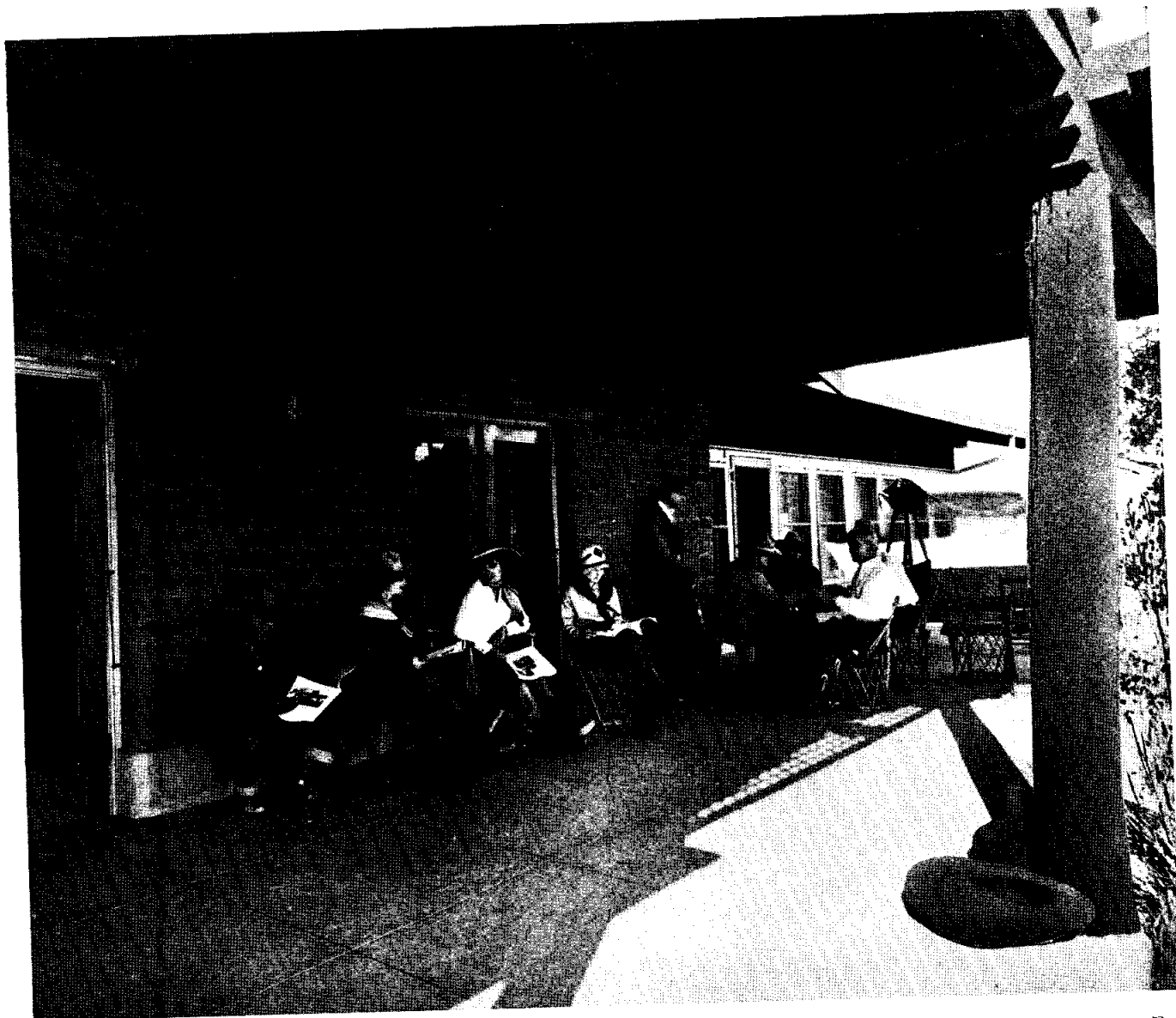
Comfortable sleeping accommodations



Cheerful dining rooms



Friendly living rooms



built of stone, each cottage having two rooms with private bath; each room has outside entry and can be used singly or ensuite of two. All bedrooms have hardwood floors. Is combination guest and cattle ranch. Close proximity of Tucson enables guests to remain at home an hour after dinner and then have ample time to attend any evening amusement in Tucson. Plenty of fresh eggs and vegetables. Accommodations for 25 guests. Rates \$65 a week, including saddle horse. Open year round.

Carr's Ranch

Globe. Take Southern Pacific to Globe. In Sierra Ancha Mountains, 55 miles from Globe. Elevation 3900 feet. In the pines. Accommodations to feed any number of people and at-

tractive cabins provide sleeping quarters for 40 persons. For those desiring to bring outfits for camping there are beautiful sites and a store and meat market on ranch. Stage from Globe makes two trips a week carrying mail, passengers and merchandise. Rates \$21 a week.

C Bar Ranch

Mrs. Wilfred A. Fiege, Dragoon. Take Southern Pacific to Dragoon; ranch is only five miles from station. Altitude 5000 feet, in Dragoon Mountains. Is old established cattle ranch with more than half a century of development behind it. Interesting pastime for those who enjoy pursuit of adventure is provided by large mines of Johnson mining district, two miles north

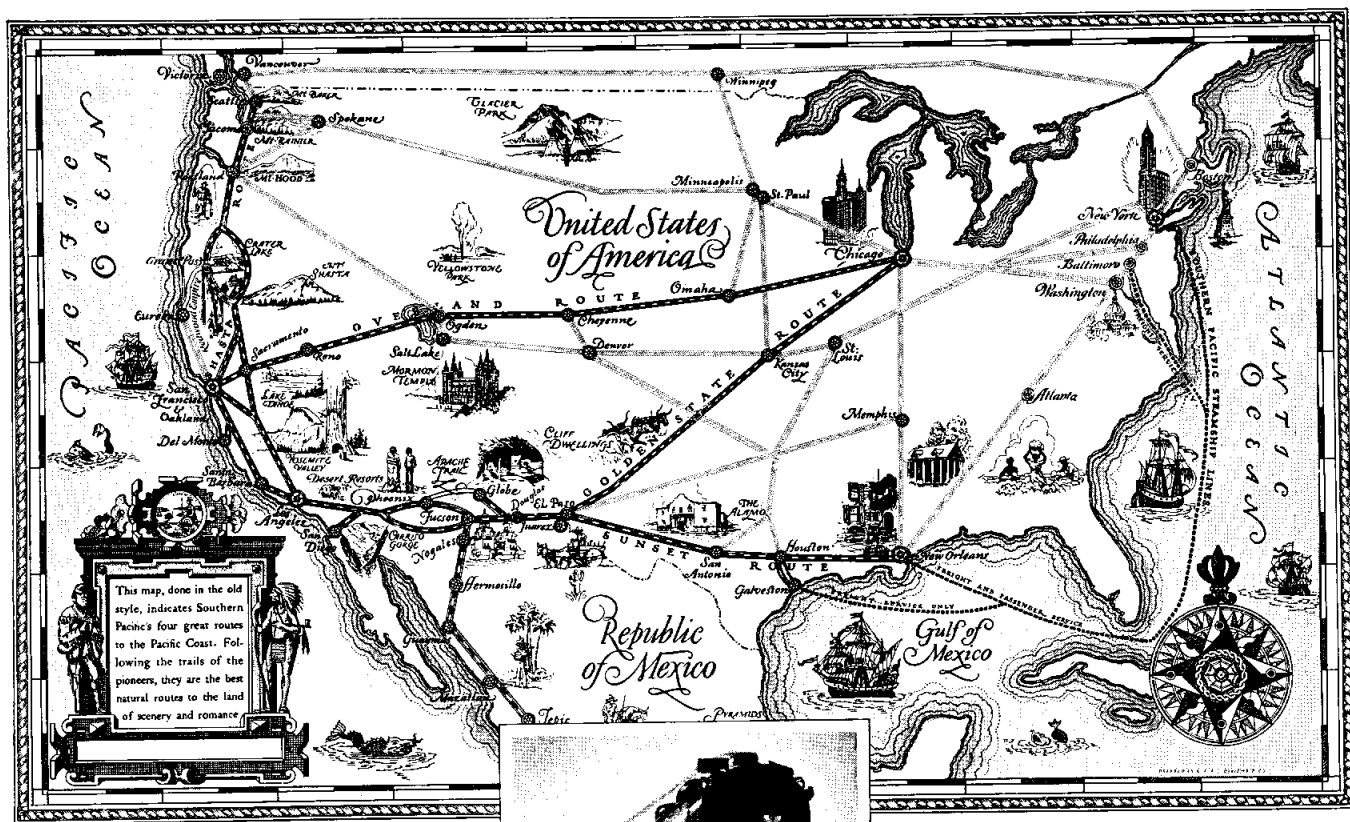


of ranch, most of which are inactive now and may be explored under watchful eye of a guide. Twenty miles southeast is famous Cochise Stronghold, natural fortress of the Apaches in early days, while to north one may visit the Isaacson Hot Springs as well as Wildcat Canyon and Box Canyon with its giant sycamores and pines. Rates \$35 a week. Use of private mount \$10 a week additional.

Lone Wolf Lodge

Springerville. Take Southern Pacific to Globe. 124 miles from Globe through some of most magnificent mountain scenery in Arizona. At present, guests must make their own travel arrangements from Globe. Located in the White Mountains.

Main hotel is cement structure, built on a Spanish-Moorish style. Art studio. Twenty bedrooms with individual baths, also ten log cabins, eight with private baths, ranging from one to three rooms. Cabins are furnished with cook stove, dining table, bed, chairs, and with hot and cold water facilities. Overlooks three large lakes, golf course and tennis courts. Swimming and boating on lakes, trout fishing, horseback riding and dancing. There are also weekly trips to points of interest, including Indian ruins, some of which have never been visited by an archaeologist; Salt Lake, extinct volcanoes, burning mountain, etc. Rates, \$60 a week for hotel guests, \$200 a month; this includes saddle horses with guides for parties. Cabins rent from \$40 to \$75 a month. Opens May 15 and closes Dec. 15.

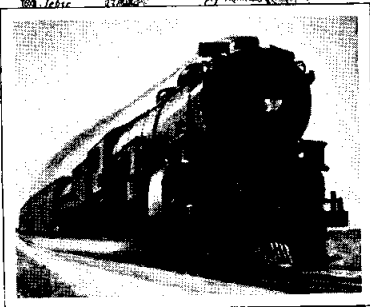


This map, done in the old style, indicates Southern Pacific's four great routes to the Pacific Coast. Following the trails of the pioneers, they are the best natural routes to the land of scenery and romance.

To the GUEST RANCHES of SOUTHERN ARIZONA—

YOU CAN make the most of your trip "Out West" if you extend it beyond Southern Arizona to include the whole Pacific Coast. This can be easily arranged by using alternate routes of Southern Pacific in going to and returning from Southern Arizona.

Only Southern Pacific offers four great scenic routes to California. The main stems of these and a few of the chief points of romantic, historic and scenic interest are indicated in the accompanying old-style outline map.



See the Whole Pacific Coast enroute

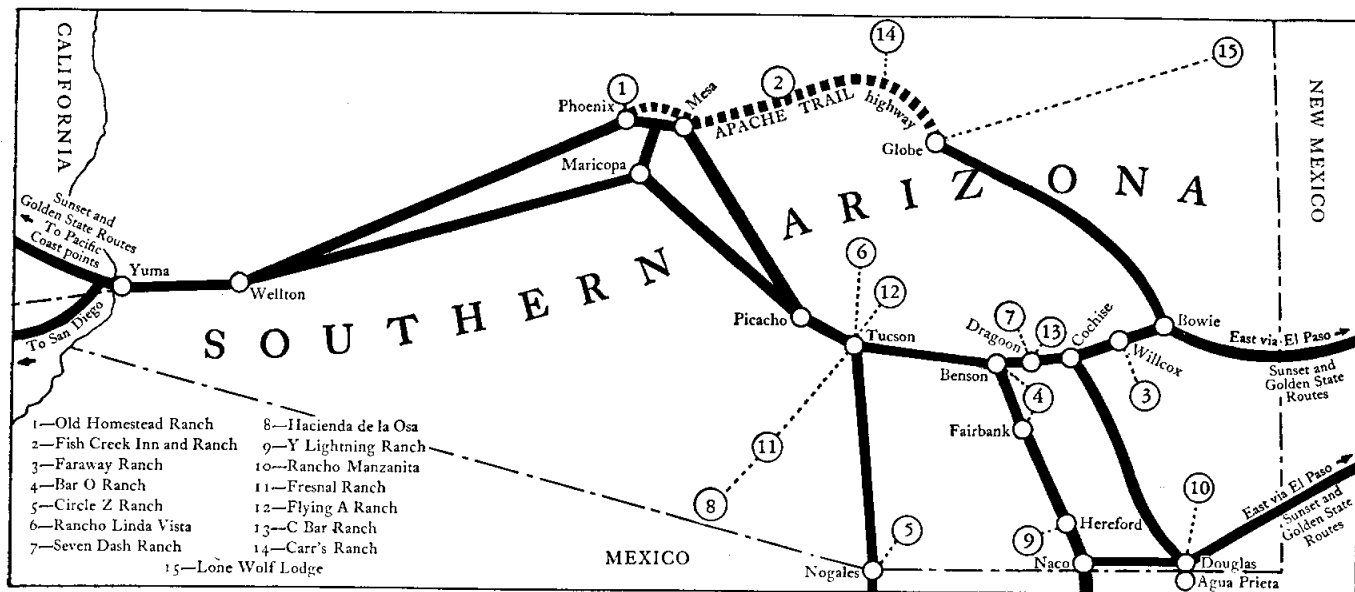
This map in full colors with historic pictorial border, 23 x 32 inches, for 25c (stamps or coin). Address F. S. McGinnis, Dept. 2, Southern Pacific Co., 65 Market St., San Francisco.

It is to the traveler's advantage to go one way, return another. By so doing he will not only have a variety of scenery going and returning across the country, but may

also see the entire sweep of the Pacific Coast. Ask your nearest Southern Pacific agent (list on next page) for a copy of Southern Pacific's free booklet "How Best to See the Pacific Coast".

Southern Pacific representatives, who are located in nearly all large cities throughout America and Europe, and their capable staffs will gladly help you arrange the details of your trip to Southern Arizona. During your trip you will find Southern Pacific employees everywhere eager to assist you in every way that they can.

How to Reach Southern Arizona Guest Ranches from Southern Pacific Trains



SOUTHERN PACIFIC REPRESENTATIVES

Your nearest Southern Pacific representative will give you full information as to passenger fares, Pullman reservations, time schedules, etc. He will also attend to such details as tickets, hotel and Pullman reservations, etc., for you, or help you with freight shipment. If there is a Southern Pacific agent in your city, he will gladly call at your office or home and personally help you arrange your trip. Phone or write him.

ALABAMA, GA., 216 Healey Bldg.	D. Ashbury, General Agent	PASADENA, CALIF., 141 East Colorado St.	G. W. Weeberby, District Passenger Agent
ALBUQUERQUE, N.M., Second and Casson Sts.	L. A. Vasey, District Freight and Passenger Agent	PHILADELPHIA, PA., 763 Parkview Bldg.	F. T. Brooks, General Agent
AUSTIN, TEX., 703 Congress Ave.	W. R. Smith, Division Freight and Passenger Agent	PHOENIX, ARIZ., 728 Security Bldg.	J. H. McClure, District Freight and Passenger Agent
BALTIMORE, MD., 220 Market Bldg.	W. B. Johnson, General Agent		S. J. Schwartz, District Passenger Agent
BIRMINGHAM, ALA., 403 Woodward Bldg.	F. L. Steeks, District Freight and Passenger Agent	PITTSBURGH, PA., 205 Park Bldg.	H. F. Starke, General Agent
BOSTON, MASS., 294 Washington St., Room 209	S. J. Brown, General Agent	PORTLAND, ORE., 445 Street Bldg.	J. A. Hogwood, District Passenger Agent
BUFFALO, N.Y., 324 Illinois Square Bldg.	F. S. Leavitt, General Agent	RENO, NEV., Commercial Row and Lake St.	Theodore Peterson, District Freight and Passenger Agent
CHICAGO, ILL., 21 West Jackson Bldg.	G. H. Vogel, General Agent	RIVERSIDE, CALIF., 750 Market St.	J. R. Downs, District Freight and Passenger Agent
CHICAGO, ILL., 35 West Jackson Bldg.	A. C. Hedlund, General Agent, Passenger Department	SACRAMENTO, CALIF., Southern Pacific Passenger Station	R. D. Owen, District Passenger Agent
CINCINNATI, OHIO, 203 Dixie Terminal Bldg.	J. H. Decker, General Agent, Freight Department	SALT LAKE CITY, UTAH, 41 South Main St.	A. A. Mickel, District Freight and Passenger Agent
CLEVELAND, OHIO, 1116 Hippodrome Bldg.	Robt. McDowell, General Agent	SAN ANTONIO, TEX., 613 Navarro St.	Tom Hood, Assistant General Passenger Agent
CORPUS CHRISTI, TEX., 402 Peoples St.	F. G. Cook, General Agent	SAN DIEGO, CALIF., 677 Sprinkles Bldg.	A. D. Hagaman, District Freight and Passenger Agent
CORUSCA, TEX., E. Collins Ave. and N. 10th St.	A. E. Monaghan, General Agent	SAN FRANCISCO, CALIF., Market St.	C. J. Sundberg, District Passenger Agent
DALLAS, TEX., 1343 Commercial St.	J. H. Events, Commercial Agent	SANTA ANA, CALIF., 222 West 4th St.	G. Hanson, District Freight and Passenger Agent
DETROIT, MICH., 293 Boston Bldg., 17th and Champa Sts.	J. E. Blodde, District Passenger Agent	SANTA BARBARA, CALIF., 937 State St.	I. B. Yalla, District Freight and Passenger Agent
DEYHOOT, MISS., 202 Majestic Bldg.	E. H. Williams, General Agent	SANTA MONICA, CALIF., Santa Monica Bldg.	G. C. Drake, District Passenger Agent
EL CENTRO, CALIF., Southern Pacific Passenger Station	H. A. Hansen, District Freight and Passenger Agent	SANTA ROSA, CALIF., 210 Rosenberg Bldg.	A. J. Rehml, District Passenger Agent
E. PASO, TEX., 141 Nat. Bank Bldg.	J. E. Monroe, District Passenger Agent	SEATTLE, WASH., 1303 Fourth Ave.	R. B. Houston, Commercial Agent
EVANSVILLE, IND., 416 Wilmette St.	L. L. Graham, District Freight and Passenger Agent	SHELVILLE, LA., 525 Market St.	M. J. Dooley, Division Freight and Passenger Agent
FORT WORTH, TEX., 116 East 9th St.	C. S. Franks, District Freight and Passenger Agent	ST. LOUIS, MO., 604 Olive St.	S. C. Beatty, District Passenger Agent
FRESNO, CALIF., corner H. and Mariposa Sts.	H. C. W. Plummer, District Passenger Agent	STOCKTON, CALIF., Main and San Joaquin Sts.	Tucson, Ariz., Score Bldg., 212 E. Congress St.
GALESTOWN, TEX., 204 Market St.	C. H. Pierson, District Passenger Agent	TULSA, OKLA., 112 No. Sixth St.	Washington, D.C., 425 Superior Bldg.
GEORGETOWN, DEL., 108 North Branc Bldg.	W. J. Carter, Assistant General Freight and Passenger Agent	WASHINGTON, D.C., 1510 H St. (N.W.)	A. P. Poston, General Agent
HAVERHURST, TEX., 205 Jackson St.	E. J. Peters, District Passenger Agent		G. V. McKay, Agent, Washington-Sancti Route
HOUSTON, TEX., 913 Texas Ave.	Lyon Liston, General Agent		
INDIANAPOLIS, IND., 148 Merchants Bank Bldg.	F. W. Sedwick, General Agent		
KANSAS CITY, MO., 113 Railway Exchange Bldg.	J. A. S. Roosenburg, General Agent for Southern Oregon		
KLAMATH FALLS, ORE., 515 Main St.	J. J. Miller, District Freight and Passenger Agent		
LAKE CHARLES, LA., Major Hotel.	Jo. Speier, Assistant General Freight and Passenger Agent		
LANE BEACH, CALIF., 145 Ocean Ave.	L. Oetman, District Passenger Agent		
LOS ANGELES, CALIF., Pacific Electric Bldg.	R. P. Monahan, District Passenger Agent		
MEDFORD, ORE., 204 Medford Nat. Bank Bldg.	A. S. Roosenburg, General Agent for Southern Oregon		
MEMPHIS, TENN., 715 Exchange Bldg.	C. A. Bevis, General Agent		
MINNEAPOLIS, MINN., 1025 Metropolitan Life Bldg.	R. K. Smith, General Agent		
MOBILE, CALIF., Southern Pacific Passenger Station	T. T. Smith, District Freight and Passenger Agent		
NEW BEDFORD, MA., Washington and Railroad Aves.	H. L. Daughenbaugh, Traveling Freight and Passenger Agent		
NEW ORLEANS, LA., 706 Whitney Cent. Bank (Poydras Br.) Bldg.	A. C. Ziegen, District Passenger Agent		
	Bailey M. Clark, General Agent, Southern Pacific Steamship Lines		
NEW YORK, N. Y., 115 Fifth Ave. (at 11th St.), Rooms 1012	N. Field, District Passenger Agent		
NEW YORK, N. Y., 531 Fifth Ave. (at 44th St.)—Southern Pacific Upwards Ticket Office	W. J. Harshbarger, Genl. Agent		
NEW YORK, N. Y., 165 Broadway (20th Floor)	H. H. Gray, General Agent, Passenger Department		
NEW YORK, N. Y., 165 Broadway	S. C. Chiles, General Agent, Freight Department		
OAKLAND, CALIF., 11th and Broadway	F. G. Rathtrauff, District Freight and Passenger Agent		
OKLAHOMA CITY, 515 David Eccles Bldg.	F. G. Rathtrauff, District Freight and Passenger Agent		
OKLAHOMA CITY, OKLA., 244 Pettine Bldg.	J. A. Eads, General Agent		

Foreign Agents

(Patrons of Southern Pacific, while abroad, may take their headquarters at these offices and have their mail addressed to them there).

GENOA (1), ITALY, Via Roma 8. Brizioleski, Kemsky & Millsbourn, *General Agents for Africa*
Greece, Italy, Palestine and Turkey

HAMBURG, GERMANY, 18 Glockengießerwall. G. Ruht, *General Agent for Austria, Denmark, Germany, Hungary, Netherlands and Norway, Poland, Rumania, Sweden and Switzerland*

HAVANA, CUBA, Room 307 Marzana de Gomez (Central Park). R. Menendez, *General Agent for Cuba*

LIVERPOOL, ENGLAND, 21 Water Street. { A. B. Reynoldson, *General Agent for Great Britain*
 { Victor Mylres, *District Agent*

LONDON, ENGLAND, 49 Leadenhall Street. { A. B. Reynoldson, *General Agent for Great Britain*
 { N. R. P. Bosser, *Assistant General Agent*

MEXICO CITY, MEX, Avenida Cien de Mayo, No. 32. F. V. Stark, *General Agent for Southern Mexico*

MILAN, ITALY, Via Dante, 32. Brizioleski, Kemsky & Millsbourn, *General Agents for Africa, Greece, Italy, Palestine and Turkey*

MONTREMY, MEX, Langloisville Bldg. H. Desmidt, *General Agent for Northern Mexico*

PARIS, FRANCE, 3 Rue Truchette. Brizioleski, Kemsky & Millsbourn, *General Agents for Africa, Greece, Italy, Palestine and Turkey*

ROME, ITALY, Piazza de Spagna, 28. Brizioleski, Kemsky & Millsbourn, *General Agents for Africa, Greece, Italy, Palestine and Turkey*

TRIN, ITALY, Via La Grange, 23. Brizioleski, Kemsky & Millsbourn, *General Agents for Africa, Greece, Italy, Palestine and Turkey*

VANCOUVER, B. C., 585 Granville St. E. J. Hendrix, *General Agent for Western Canada*

E. W. CLAPP, *Traffic Manager*, Chicago, Ill.

E. J. FENCHURCH, *General Freight and Passenger Agent*, Phoenix, Ariz.
J. A. ORMANDY, *Assistant Passenger Traffic Manager*, Portland, Ore.
C. L. MCFALL, *Assistant Passenger Traffic Manager*, Los Angeles, Cal.
L. H. GOFF, *Tragic Manager, Mexican Lines*, Guadalajara, Mex.
J. D. MASON, *General Passenger Agent*, El Paso, Tex.

C. S. FAY, *Traffic Manager, Texas and Louisiana Lines*, Houston, Tex.
J. T. MONROE, *Assistant Traffic Manager-Passenger, Tex. and La. Lines*, Houston, Tex.
J. F. SULLIVAN, *General Passenger Agent*, Houston, Tex.
W. C. MCCORMICK, *General Passenger Agent*, New Orleans, La.
WM. SIMMONS, *Traffic Manager, Southern Pacific Steamship Lines*, New York, N. Y.
J. C. MCGEE, *Traffic Manager*, San Francisco, Cal.