

# SAHUARO LAKE RANCH



MESA  
ARIZONA

09791  
R185  
Pam-65

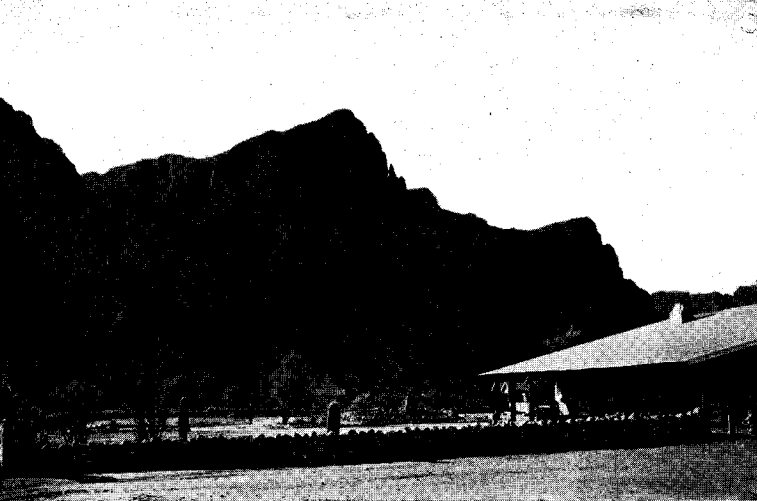


**S**AHUARO LAKE RANCH is situated within the Tonto National Forest and in the APACHE TRAIL country. It is built on a flat bench at the foot of Stewart Mountain and faces east overlooking the beautiful Salt River. To the south Bull Dog Mountain, colorful and awe-inspiring, ascends from the river bank to a sheer height of one thousand feet above the river bed.

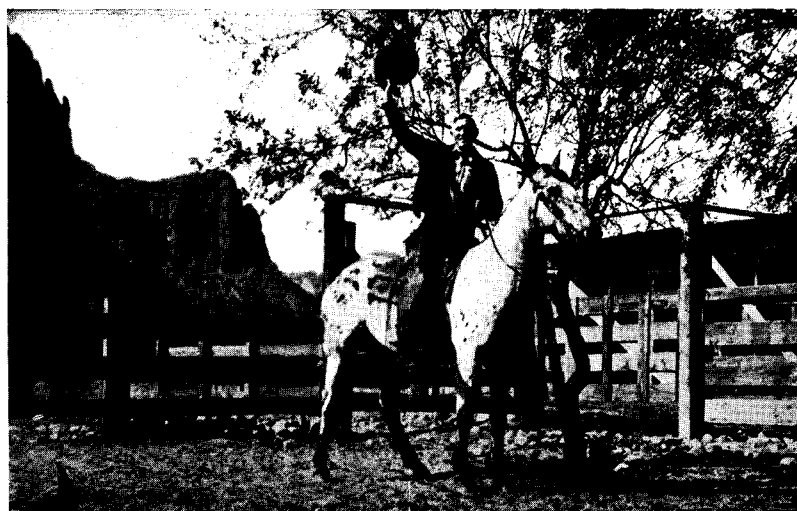


**S**AHUARO LAKE is just a six minute hike from the ranch. This lake is ten miles long and extends through a picturesque mountain region where rugged canyon walls, gorgeously colored, form an imposing shore line. Only the extreme lower end of the lake is accessible by auto; the balance must be seen from a boat or approached by horseback, hence all of Nature's original wildness and solitude is still preserved.





**Y**OU will enjoy riding horseback over the many interesting trails leading out from Sahuaro Lake Ranch, through rugged canyons, up high into the mountains to the haunts of wild game — deer, peccary and smaller animals — or down the river through forests of the Giant Sahuaro Cacti, some of which are a thousand years old and each one with an individuality all its own. Other trails take you out over rolling hills where you pick your way



among interesting desert growth and out into the open spaces where you can see for miles and miles and not a sign of human habitation. Herds of cattle roam over these vast stretches practically undisturbed until time for the Spring round-up. You need not be an experienced rider — one of our trustworthy cowboys is always with you and if desired will give you a few private riding lessons. Frequent riding parties for the day are arranged and a pack horse or the chuck





wagon is taken along to carry the "grub," and the guide cooks the noon meal in true cowboy style over the open fire.



**I**F you wish to relax, then go "fishin'" in Sahuaro Lake. Black Bass, Perch and Crappie are plentiful and the season is open all year. It is just a few minutes hike

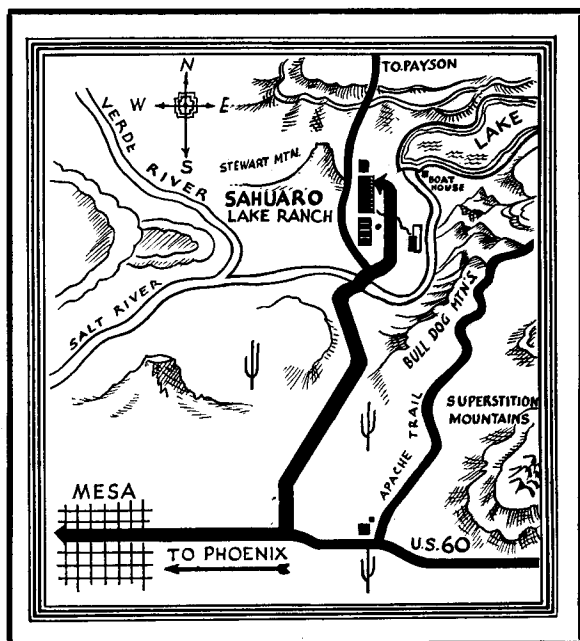


to the boat house where motor-boats and row-boats are available. On moonlight nights you are invited on a launch ride early in the evening to some beautiful spot on the shore line of the lake—a campfire and thick juicy steaks broiled over the coals, a ravenous appetite, cowboy songs as the moon rises over the mountain peaks and reflects on the water and then—well, you just realize too soon that it is getting late and you reluctantly start back, but long will you remember the experience.

Two of the finest golf courses in the state offer their facilities to guests of the ranch, and can be reached in about one hour's driving time.



# SAHUARO LAKE RANCH



## AUTO TRIP TO RANCH

**A**FTER leaving the Apache Trail, U. S. 80, eight miles east of Mesa, the noise and unrest of the city is left behind and one enters the cattle country with its few scattered ranches and vast distances. The country at first is flat desert with its sparse growth of cactus, greasewood and sage brush, then, as the road gradually ascends, the growth becomes more luxuriant and the Giant Sahuaro Cactus appears and soon you are in the foothills where the desert growth is at its best with its beautiful Palo Verde, Mesquite and Ironwood trees, the different varieties of cactus—Cholla, Ocatilla, Prickly Pear—and the Giant Sahuaros like haughty sentinels on guard. Soon you are over a divide where, awaiting you is a wonderful panorama of range upon range of mountains and in the immediate foreground the road winding its way down through massive granite boulders demanding space in a forest of Giant Sahuaros and Palo Verde trees to a narrow valley through which flows the famous Salt River. Following closely the channel of the river, you drive a few miles to a natural gateway in the mountains and just beyond lies Sahuaro Lake Ranch, situated in the most beautiful setting to be found in Southern Arizona.

## SAHUARO LAKE RANCH

Phil K. Lewis, Owner and Manager  
Mesa, Arizona