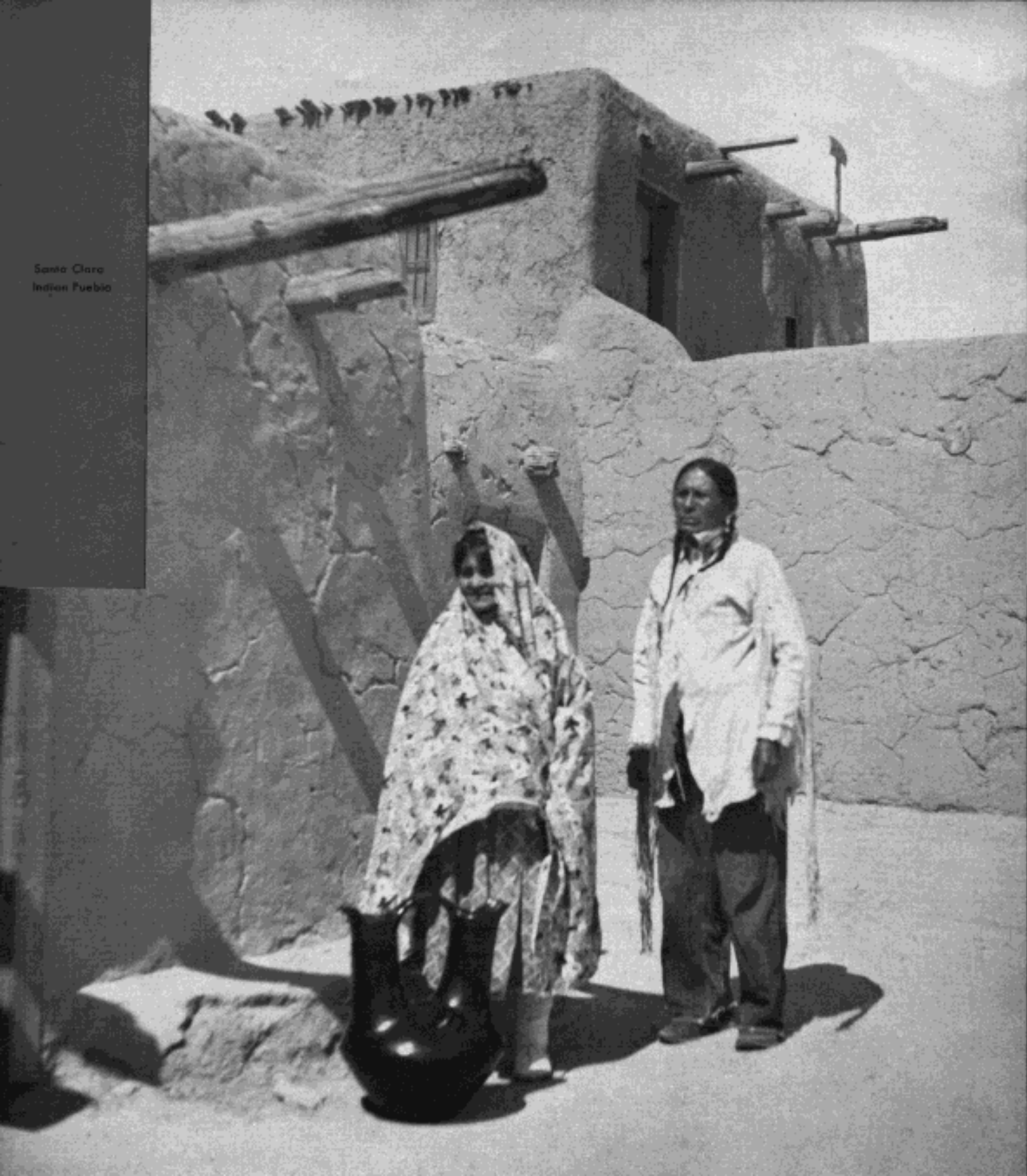


Santa Clara
Indian Pueblo





Indian Ceremonial
Dance

TWO-DAY INDIAN-DETOUR

All-expense (except meals)—\$30.00

No two-day stop-over in New Mexico could be planned to give a more comprehensive glimpse of the charm of the Spanish-Indian area 'round about Old Santa Fé, than that afforded by the two-day Indian-detour.

Eliminating the one full day devoted to the Frijoles Canyon drive, and one night at La Fonda, the two-day Indian-detour duplicates exactly the explorations of the three-day Indian-detour, described in the preceding pages.

There are two nights at La Fonda, in room with private bath; the trips to the Puyé cliffs and Santa Clara Indian Pueblo, and to Don Fernando de Taos and Taos Pueblo; the drive about Old Santa Fé; and the return to Lamy.

ONE-DAY INDIAN-DETOUR

All-expense (except meals)—\$14.00

The one-day Indian-detour is designed for those who are pressed for time, yet still includes the quaint capital of New Mexico and the Spanish-Pueblo area.

The one-day Indian-detour now offers an improved and extended routing, including Santa Clara Indian Pueblo and the Puyé cliff dwellings.

At a convenient hour, guests leave La Fonda by Couriercoach for drive to the Puyé cliff dwellings. En route a visit is made at Santa Clara Pueblo. After inspection of the prehistoric ruins, the return trip is broken to visit San Ildefonso.

Part of the day is given over to a city drive about Old Santa Fé, including the Palace of the Governors, the Cathedral, Museum, and Chapel of San Miguel.

TESUQUE INDIAN-DETOUR

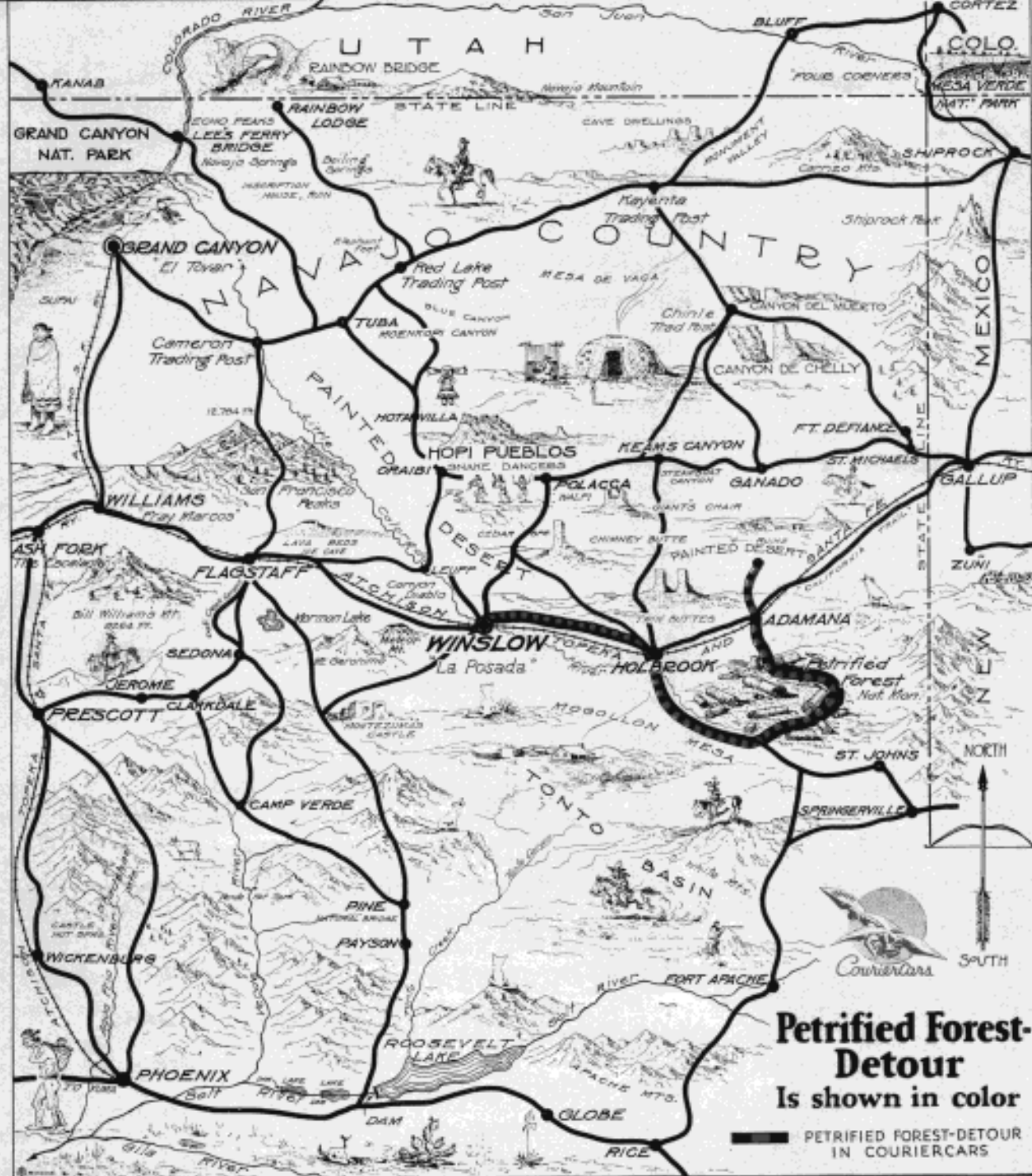
All-expense (except meals)—\$10.00

Half-day motor trip to Tesuque Canyon, thence to the Tesuque Indian Pueblo and also the Old Santa Fé city drive, including visit to Laboratory of Anthropology and Oldest Church. The balance of day is free for visiting in Santa Fé.

The Tesuque Indian-detour provides for one night at La Fonda, in room with private bath, and return by motor to Lamy to continue one's rail journey eastward or westward.



Rancho de Taos
Mission, built
in 1772



Petrified Forest-Detour Is shown in color

**PETRIFIED FOREST-DETOUR
IN COURIERCARS**

GENERAL INFORMATION

Rates for Indian-detours include motor transportation, Courier service, admission fees and either one, two or three nights lodging with private bath as the case may be. For children five years of age and under twelve, rates are one-half; no charge for children under five occupying same bed as parent or guardian, or cot in same room. Meals in all cases are extra.

SUITABLE CLOTHING—All Indian-detour cars are heated, when required. Most guests, however, wish to stroll about pueblos and ruins. Walking shoes are therefore desirable. Ladies will find light top coats acceptable in summer; for winter months suits with heavy coats are suggested.

Hand Baggage will be transported on motor cars free, if offered in proper containers, such as valises, telescopes, suit cases, leather hat boxes and satchels.

Storage of Baggage for Passengers making Indian-detours. No baggage will be checked through via an Indian-detour. No storage charge will accrue at stations on Santa Fe lines during the time consumed in making an Indian-detour.

Agents at Lamy or Santa Fé will, on application, issue a certificate to passengers making an Indian-detour, which will be authority for agents at destination of baggage to waive storage charges for the number of days consumed in making an Indian-detour.

INDIAN - DETOURS—Subject to change without notice—The Indian-detours, and the majority of other special Couriercar motor cruises are available daily throughout the year.

TRAIN CONNECTIONS—There is motor coach service connecting Indian-detour headquarters at La Fonda, Santa Fé, with all Santa Fe mainline trains at Lamy, New Mexico.

PRIVATE CAR SERVICE—Private Couriercar service will be furnished over the Indian-detours following regular schedules or on special itineraries. Rates quoted on wire or letter request to Hunter Clarkson, Inc., Santa Fé, New Mexico.

MEALS—On the One-day Indian-detour, luncheon is taken at La Fonda, Santa Fé. On the Two-day and Three-day Detours, at La Fonda, Taos, and Inn in Frijoles Canyon. On the Tesuque Detour, all meals are taken at La Fonda.



Pottery Maker at
San Ildefonso
Pueblo



La Posada Hotel,
Winslow, Arizona
←



Canyon de Chelly,
Arizona
→

On Petrified Forest
Dufour
←



At Frijoles, luncheon is \$1.00 or a la carte; at Taos, 85c or a la carte. All other Indian-detour meals are taken at La Fonda, where charges are as follows:
Breakfast: 50c to \$1.00 Luncheon: 50c to \$1.50 Dinner: \$1.00 to \$2.50
and a la carte and a la carte and a la carte

The cost of excellent table d'hôte meals on the Indian-detours, therefore, ranges from \$2.00 to \$5.00 per diem, according to the selection made.

DETOUR TRIPS FROM WINSLOW, ARIZONA (May 15th to Sept. 15th only)—**La Posada, at Winslow, Arizona**—La Posada is not only the latest of the Fred Harvey hotels, but it is quite as distinctive in its way as famous La Fonda, in Old Santa Fé. In style, La Posada represents one of those ranchos of Old Mexico that for centuries have been the ancestral homes of old Spanish families.

Winslow centers a hundred points of interest and from La Posada one can develop private Indian-detours by Couriercar of two days, three days, or longer, to the adjacent Navajo Country, the Hopi Villages, the Rainbow Bridge, the White Mountains, or to or from Grand Canyon and Santa Fé.

The Petrified Forest Detour—Each year thousands who cross Arizona, make it a point to visit Petrified Forest National Monument. Passengers over Santa Fe's transcontinental lines, may do this conveniently in stopover at Winslow of a few daylight hours.

Charge for Petrified Forest Detour is \$10.00 per person, with a minimum of two fares required. Advance notice should be given, by mail or wire, to Hunter Clarkson Tours, Inc., La Posada Hotel, Winslow, Arizona.

Meteor Mountain Detour—A trip to Meteor Crater, 26 miles west of Winslow, can be made when 24-hour stop-over is allowed, combined with Petrified Forest Detour, making a full day's trip. Rate for Meteor Crater \$5.00 per person—minimum two fares.

Hopiland Detour—A motor trip north through the Navajo Indian Reservation, overlooking parts of the Painted Desert, to Hopi Reservation and return, visiting Walpi Indian Pueblo. Rate \$17.50 per person, in 4-passenger light sedan; \$25.00 per person in 6-passenger Couriercar, with minimum of two full fares required.

Mesa Verde Detour—A two-day motor trip of 340 miles from Gallup, N. M., to Mesa Verde National Park and return via Navajo Reservation, Shiprock and Cortez. Rate \$25.00 per person—not including meals or hotel accommodations. Minimum of two fares required.



Indescribable
Grand Canyon
→



SANTA FE RAILWAY AGENCIES

For information about Pullman rates, train schedules, rail fares, and other information helpful in arranging any western trip via the Santa Fe, apply to your local ticket agent, or address the Santa Fe representative at any one of the agencies named below:

Amarillo, Tex., General Office Bldg.	Houston, Tex., Shell Bldg., 605 Fannin St.	Riverside, Calif., Santa Fe Station.
Atlanta, Ga., 815 Rhodes-Haverty Bldg.	Indianapolis, Ind., 311 Merchants Bank Bldg.	Sacramento, Calif., 1000 10th St.
Beaumont, Tex., 643 Orleans St.	Kansas City, Mo., 1100 Baltimore Ave.	St. Joseph, Mo., 505 Francis Street.
Berkeley, Calif., 98 Shattuck Square.	Leavenworth, Kan., 781 Shawnee St.	St. Louis, Mo., 296 Arcade Bldg.
Boston, Mass., Rooms 4-5 Little Bldg., 80 Boylston St.	Long Beach, Calif., 117 Pine Ave.	Salt Lake City, Utah, 606-607 McCornick Bldg.
Buffalo, N. Y., 201 Ellicott Sq. Bldg.	Los Angeles, Calif., 743 S. Hill St.	San Antonio, Tex., 1119 Majestic Bldg.
Chicago, Ill., 179 W. Jackson Blvd.	Mexico City, Mex., Bolivar No. 22-B.	San Bernardino, Calif., Santa Fe Station.
Cincinnati, Ohio, 703 Dixie Terminal Bldg.	Milwaukee, Wis., 401 Majestic Bldg.	San Diego, Calif., Cor. of Fifth Ave. and B St.
Cleveland, Ohio, 1105 Terminal Tower Bldg.	Minneapolis, Minn., 211 Metropolitan Life Bldg.	San Francisco, Calif., 235 Geary St.
Colorado Springs, Colo., Santa Fe Station.	New Orleans, La., 627 Whitney Bldg.	San Jose, Calif., 115 So. First St.
Dallas, Tex., 1116 Commerce St.	New York City, 500 Fifth Ave.	San Pedro, Calif., 819 So. Pacific Ave.
Denver, Colo., 524 17th St.	Oakland, Calif., 432 13th St.	Santa Ana, Calif., 301 N. Main St.
Des Moines, Ia., 601 Equitable Bldg.	Oklahoma City, Okla., 6 So. Robinson St.	Santa Barbara, Calif., 915 State St.
Detroit, Mich., 504 Transportation Bldg.	Pasadena, Calif., Santa Fe Station.	Santa Fé, N. M., On the Plaza.
El Paso, Tex., Cor. San Francisco St. and Pioneer Plaza.	Peoria, Ill., 211 Jefferson Bldg.	Santa Rosa, Calif., 217 Fourth St.
Fort Worth, Tex., 808 Houston St.	Philadelphia, Pa., 302-303 Franklin Trust Bldg.	Seattle, Wash., The 1411 Fourth Ave. Bldg.
Galveston, Tex., 411 22nd St.	Phoenix, Ariz., 149 N. Central Ave.	Tulsa, Okla., 417 S. Boston Ave.
Glendale, Calif., 107 S. Brand Blvd.	Pittsburgh, Pa., 1222 Gulf Bldg.	Washington, D. C., 525 Shoreham Bldg.
Hollywood, Calif., 6405 Hollywood Blvd.	Portland, Ore., 1015 American Bank Bldg.	Wichita, Kan., 314 Union National Bank Bldg.
	Pueblo, Colo., 401 N. Union Ave.	Wichita Falls, Tex., 608 Staley Bldg.

PASSENGER DEPARTMENT OFFICIALS

T. B. GALLAHER, *Passenger Traffic Manager*, Santa Fe System Lines, Chicago, Ill.

R. T. ANDERSON, <i>Gen'l Pass. Agt.</i> A. T. & S. F. Ry. Topeka, Kan.	C. C. THOMPSON, <i>Gen'l Pass. Agt.</i> A. T. & S. F. Ry.—Coast Lines Los Angeles, Calif.	H. C. VINCENT, <i>Gen'l Pass. Agt.</i> Panhandle and Santa Fe Ry. Amarillo, Tex.
L. R. EVERETT, <i>Asst. Gen'l Pass. Agt.</i> A. T. & S. F. Ry.—Coast Lines San Francisco, Calif.	T. H. MURRAY, <i>Asst. Gen'l Pass. Agt.</i> A. T. & S. F. Ry.—Coast Lines Phoenix, Ariz.	A. C. AYER, <i>Gen'l Pass. Agt.</i> G. C. & S. F. Ry. Galveston, Tex.



Santa Fe

The Atchison, Topeka and Santa Fe Railway Co.
and Connections



