

# Tucson

The Sunshine  
Center of  
America

# Arizona

Rings You a  
Welcome



The Bells of San Xavier Mission  
Founded 1700



# TUCSON

*"The Sunshine Center  
of America"*

One of the oldest and most progressive cities of the United States. Its romantic and historic background; unusual, enchanting, picturesque scenery; great open spaces; gripping western appeal; golden climate; substantial growth; makes it an ideal community for those who desire REST, RECREATION, HEALTH, BUSINESS.

## HISTORIC LURE

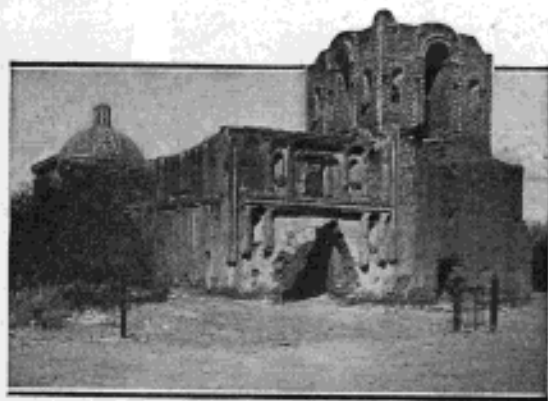
The Pueblo del Tucson was an important Indian village in 1540 when Coronado and his conquistadors passed this way in search of Cibola. The early traditions have long been buried with the crumbled walls of the Indian village; Spanish occupation preceded the landing of the Pilgrims on the New England shores; even the robust American pioneer days antedate the Gadsden Purchase of 1853. The Indian period, the Spanish Conquistador regime and the sterling American conquest were days of romance and achievement blending into a unique and quaint local atmosphere which has made this city known to the tourist as—Tucson—"The Old Pueblo."

## BASK IN FREE SUNSHINE

A golden foundation, greater than man may endow, is offered you at Tucson—sunny, fogless, dry and invigorating climate. More than 300 days of certified sunshine to restore health, to renew hope and to provide delightful days for rest and recreation.

## ENJOY THE GREAT OUTDOORS

Whether it be in quest of health, touring, scientific research, hunting, or just to play, the surrounding mesas, ever green—covered with cacti, palo verde, mesquite, etc.—and the rugged mountain sections of Southern Arizona, offers a great unmatched natural playground.



TUMAÇACORI MISSION -- NATIONAL MONUMENT



INDIAN PICTURE ROCKS

## EDUCATIONAL CENTER OF THE SOUTHWEST

Tucson has the State University, public schools ranking second in order of excellency in the United States, and many excellent private schools. The latter are located on open mesa lands where out-of-door life builds for strong healthy maturity.

## ACCOMMODATIONS

Beautiful Spanish-type bungalows, first-class hotels, up-to-date apartment houses, an excellent tourist hotel, surrounding guest ranches—where you have the atmosphere of a "real cow ranch" with city hotel appointments—have been provided for your comfort.

## RECREATION

Three hundred days of sunshine and the great out-of-doors contribute greatly to your enjoyment of golf, polo, riding, motoring, big game hunting, fishing, trap-shooting and picnicing.



RUINS OF FORT LOWELL

## CENTER OF CULTURE

The University, University Clubs, Women's Club, Saturday Morning Musical Club and fine churches have made Tucson a center of culture, colored with romantic Spanish atmosphere and founded on the traditional western hospitality of the sturdy American pioneers.

## TRAIL-BLAZING

The Golden Railway  
The Broadway of America  
The Sunshine Airway

Pioneer trails led the way for the stage coach followed by the Southern Pacific Railroad. These marked the easy way for an "all-year-high-gear" coast-to-coast highway, and the Sunshine Airway which offers the best transportation route across the American continent. Now rail, highways and airways bring Tucson within convenient reach of the great cities of the United States.

Quoting from "On Your Way":

"TUCSON—The Triumphant."

"Here the early Padres trod,  
Filled with zeal for Spain and God;  
Here the redman and the white  
Waged their soul-destroying fight;  
But the spell of desert haze,  
Silver nights and golden days,  
Bound the hearts of all who came  
To those scenes of blood and flame.

• • • • •  
Priest and pioneer have gone  
But they left the world—TUCSON!"



SAN XAVIER MISSION

# BUILDINGS IN TUCSON



El Conquistador Hotel



Hotel Bldg



Three Residences



Government Hospital



Office Bldg



A Church



New Court House



A Private School for Boys



High School



A Grade School



A Campus scene



Dormitory on University Campus





# SCENES AROUND TUCSON



Desert Glimpses



Ranch Corral  
A Highway



Polo



At The Rodeo



On The Green



Indian Ceremonial Dancers



Buck Bagged Near Tucson



Mountain Resort  
Easy of Access



Picnic Site



Barro Train



Familiar  
anyon  
Scene

In The  
Wonderland  
of Rocks



Indian Hopars  
On Reservation

# PIMA COUNTY SCENES



Leaching and Concentrating Plants at Ajo



A Guest Ranch Interior



Typical Corral



Example of Extensive Poultry Farms



Cow Man



Thoroughbred Stock



Old Time Prospecting



Cotton Gin



Dude Ranch



Picturesque Adobe Shack



Come by Highway - Rail or Air



## FACTS ABOUT TUCSON

**C**IMATE  
OPPER  
OTTON  
ATTLE  
OMMERCE  
ULTURE

Elevation, 2398 feet m. s. l.

### POPULATION

1890 .....	5,150	1925 .....	33,800
1920 .....	20,292	1929 .....	47,000

### SCHOOL ENROLLMENT

1910-'11 .....	2,424	1925-'26 .....	6,842
1920-'21 .....	5,094	1927-'28 .....	8,055

### UNIVERSITY OF ARIZONA

1928-'29 ..... 2,000

### BUILDING PERMITS

1920 .....	\$1,192,155	1925 .....	\$1,345,858
1928 .....	\$2,909,210		

### ASSESSED VALUATION

1920 .....	\$20,633,000	1925 .....	\$24,127,575
1928 .....	\$29,738,377		

### PAYROLL

Over \$12,000,000

### CLIMATE

Certified to be the "Finest in America."  
U. S. Weather Bureau records of 40 years give; Over 309 days of sunshine; temperature, annual mean average, 64.1°; September to June, mean average, 59.7°; June to September, mean average, 76.6°; humidity, mean A. M. 51.8%, P. M. 32.5%; rainfall total average annual 11.8 inches, monthly average, September to May .79 inch, May to September 1.10 inches; average maximum, July 2.30 inches.

We invite correspondence for additional information and literature about TUCSON OR PIMA COUNTY.

### CHAMBER OF COMMERCE

Tucson, Arizona

Published in co-operation with  
Pima County Immigration Commissioner.